

FPS



50 Hz 6" STS SERIES Submersible Turbine Pumps

FEATURES

- Premium ductile iron casting for longer life and higher pressures
- Longer discharge and motor bracket bearings for increased pump life
- Spiral cutlass rubber intermediate bearings designed for harsh environments
- 416 stainless steel pump shaft ground and polished for maximum durability
- Investment cast stainless steel impellers for maximum abrasion resistance
- Custom pumps available

SPECIFICATIONS

- 6" – 52, 60, 68, 90 m³/h

MODEL NO. EXPLANATION

Example: 68STS15D6X-0764

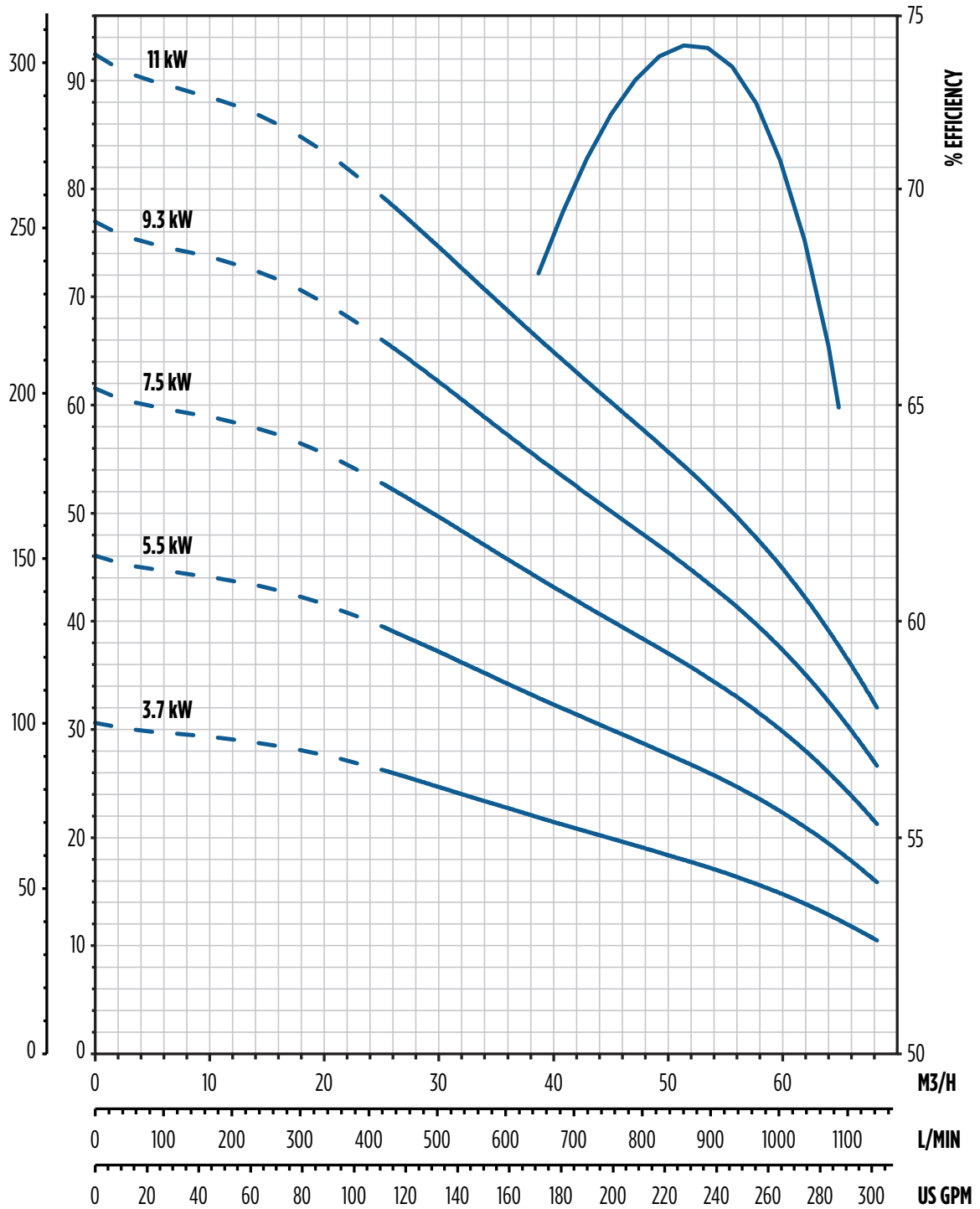
- 68 = Flow series m³/h
- STS = Series (Sub Turbine)
- 15 = Motor kW (15)
- D = Ductile iron
- 6 = Pump diameter (6")
- X = Impeller trim configuration
- 07 = Number of stages
- 6 = Motor size (6")
- 4 = Discharge size (4")



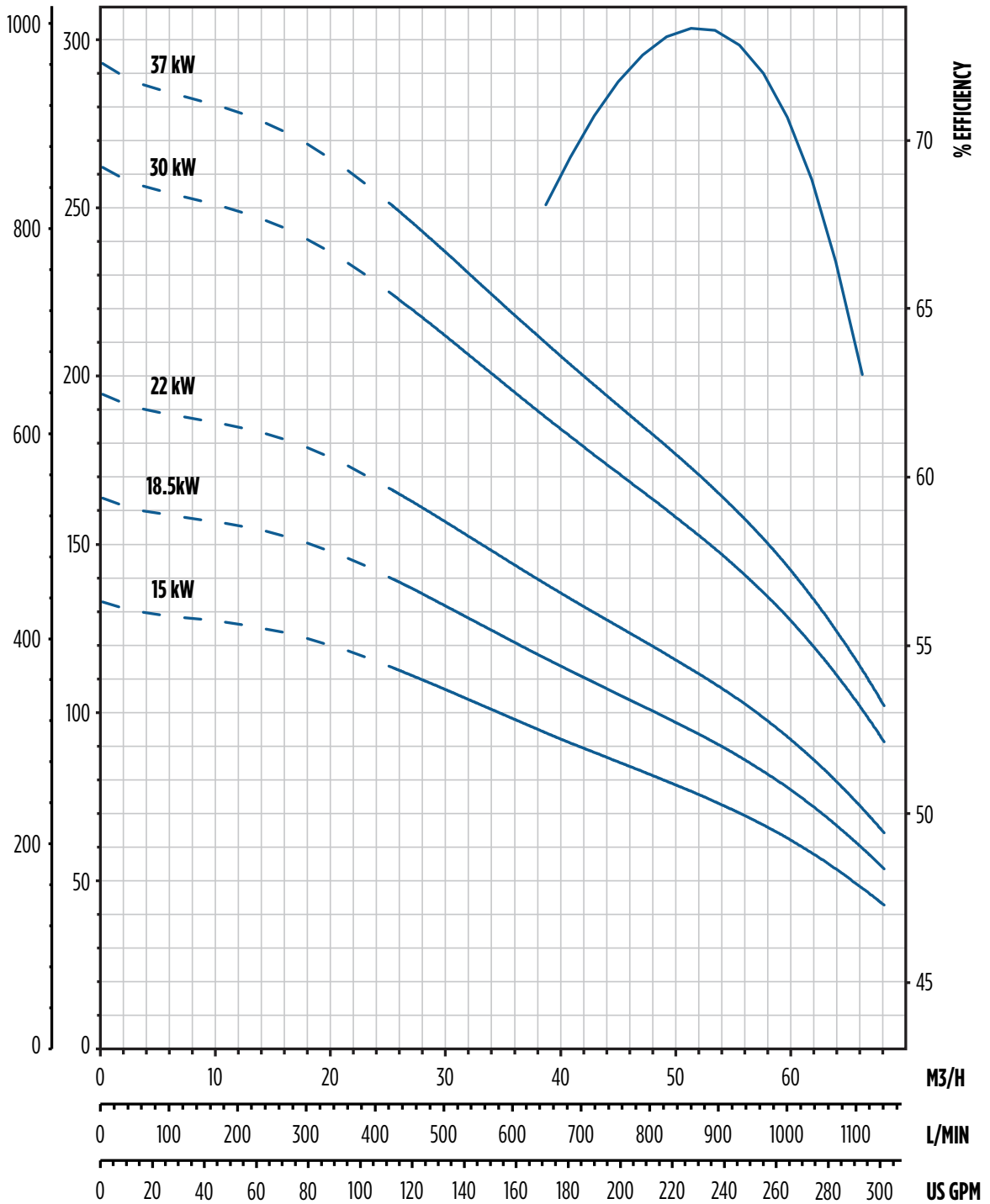
50 Hz 52STS SERIES Submersible Turbine Pumps

PERFORMANCE - 6" 52 M³/H

FEET METERS



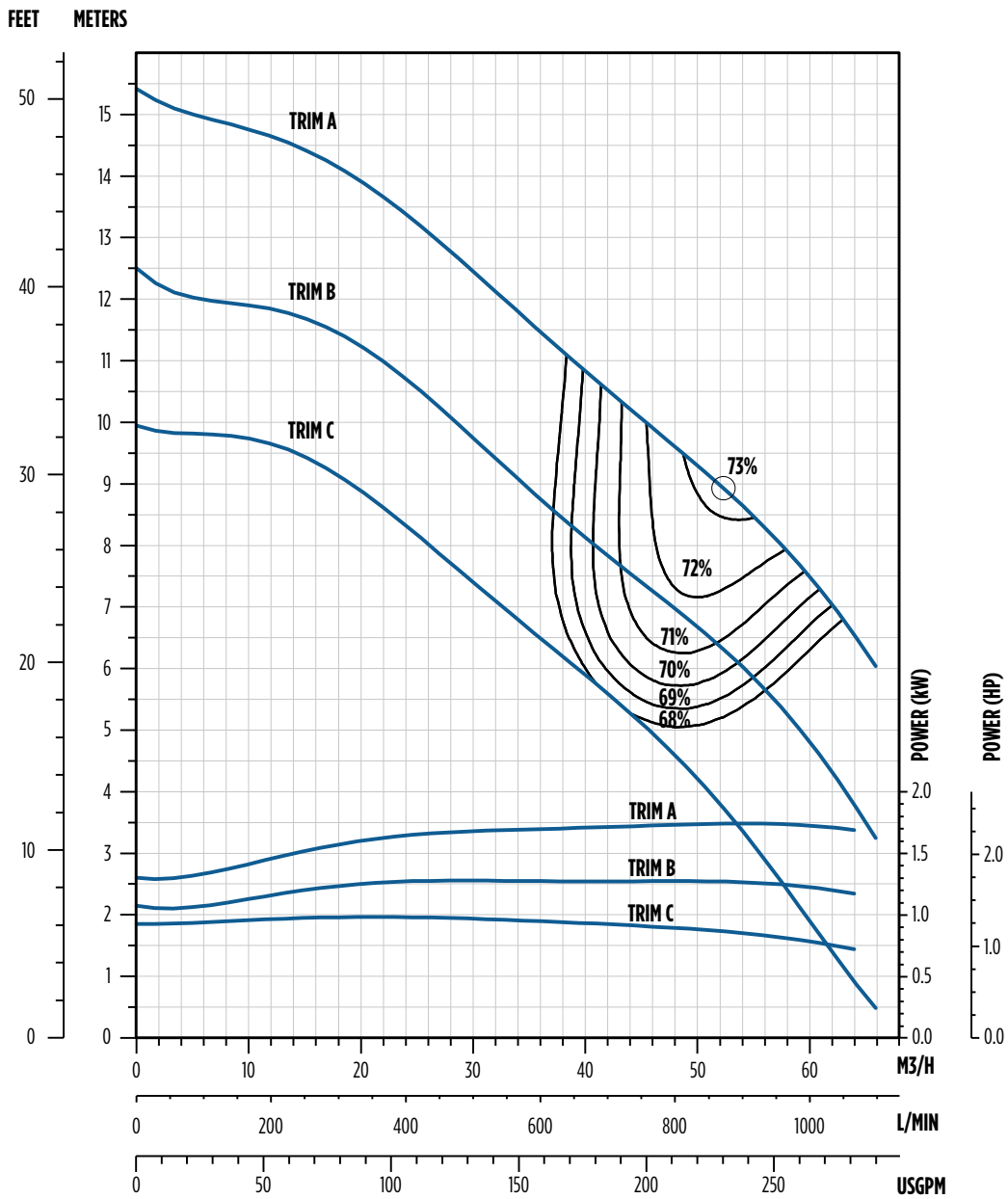
Note: Performance based on 68 °F / 20 °C fresh water, 6" motor at 2850 rpm

FEET METERS


Note: Performance based on 68 °F / 20 °C fresh water, 6" motor at 2850 rpm

50 Hz 52STS SERIES Submersible Turbine Pumps

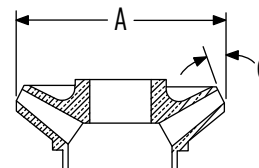
SINGLE-STAGE PERFORMANCE - 6" 52 M³/H



Note: Efficiencies are typical, not guaranteed. Efficiency correction required for low stage count (1 stage - 3%, 2 stage - 1%, 3 stage - 0%)
 Bowl #9 begins transition to double-bolted (8 bolts @ bottom, 14 bolts @ top)
 Nominal rpm: 2850

IMPELLER SPECS

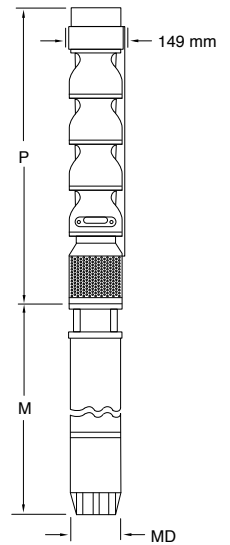
Trim	Diameter [mm]	C Angle
A	116.03	17°
B	106.50	17°
C	96.98	17°



DIMENSIONS

M ³ /H	kW	Stages	Trim	Motor	P	M*	MD*	Motor Wt.	Pump Wt.
					mm	mm	mm	kg	kg
52	3.7	2	2A	6"	647	582	137	37.5	27.2
	5.5	3	3A		767	615		41.1	32.2
	7.5	4	4A		888	645		45.2	37.6
	9.3	5	5A		1009	679		47.5	42.6
	11	6	6A		1129	711		50.9	47.6
	15	9	7A, 2B		1491	777		56.7	63.0
	18.5	11	9A, 2B		1733	841		63.3	72.6
	22	13	11A, 2B		1974	907		69.3	83.5
	30	17	17A		2456	1036		83.9	103.9
	37	19	19A		2698	1405		138.0	112.9

Note: *MD diameter = Franklin Electric motor, M = Maximum length of Franklin Electric motor



ORDERING

M ³ /H	kW	Stages	Trim	Motor	Discharge	Order No.	Model No.	Ship Wt. [kg]
52	3.7	2	2A	6"	4" BSPP	97060052102	52STS3D6A-0264	32.7
	5.5	3	3A			97060052103	52STS5D6A-0364	38.6
	7.5	4	4A			97060052104	52STS7D6A-0464	41.3
	9.3	5	5A			97060052105	52STS9D6A-0564	49.9
	11	6	6A			97060052106	52STS11D6A-0664	54.9
	15	9	7A, 2B			97060052109	52STS15D6X-0964	83.9
	18.5	11	9A, 2B			97060052111	52STS18D6X-1164	93.4
	22	13	11A, 2B			97060052113	52STS22D6X-1364	108.9
	30	17	17A			97060052117	52STS30D6A-1764	133.4
	37	19	19A			97060052119	52STS37D6A-1964	145.1

SPECS

Minimum Well I.D.	6"
Minimum Submergence Above Inlet	3 meters
Discharge	4" BSPP
Maximum Working Pressure	Standard: 24.1 bar - Double Bolted: 46.5 bar

Note: Refer to Franklin Electric AIM data for motor cooling requirements.

MATERIALS

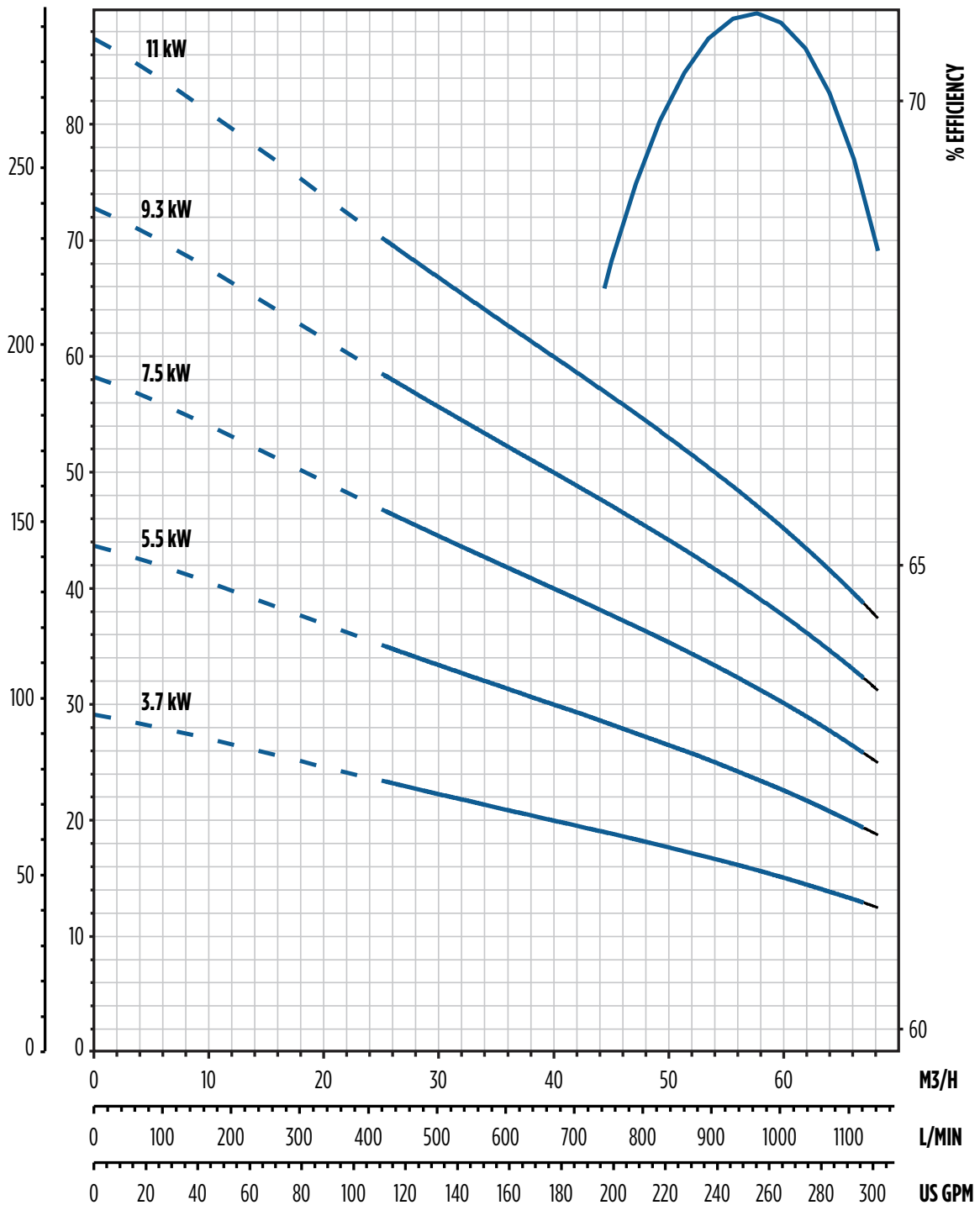
Part	Material	Specification No.
Discharge Bracket	Ductile Iron	ASTM A536 65-45-12
Top Bowl	Ductile Iron	ASTM A536 65-45-12
Intermediate Bowl	Ductile Iron	ASTM A536 65-45-12
Bearings, Discharge / Suction	Bronze	ASTM 8584 C89835
Impeller	304 Stainless Steel	ASTM A743/A743M CF8
Pump Shaft	416 Stainless Steel	ASTM A582 S41600
Suction Bracket	Ductile Iron	ASTM A536 65-45-12
Bowl Bearing	Rubber	
Sand Collar	300 Stainless Steel	ASTM A666
Suction Screen	302 Stainless Steel	ASTM A240 S30200
Cable Guard	300 Stainless Steel	ASTM A666
Shaft Coupling	416 Stainless Steel	ASTM A582 S41600
Upthrust Bolt	300 Stainless Steel	ASTM A666
Taper Lock	416 Stainless Steel	ASTM A582 S41600
Bolting	300 Stainless Steel	ASTM A666

Note: Bowl bearing and shaft options available. Contact customer service for available options.

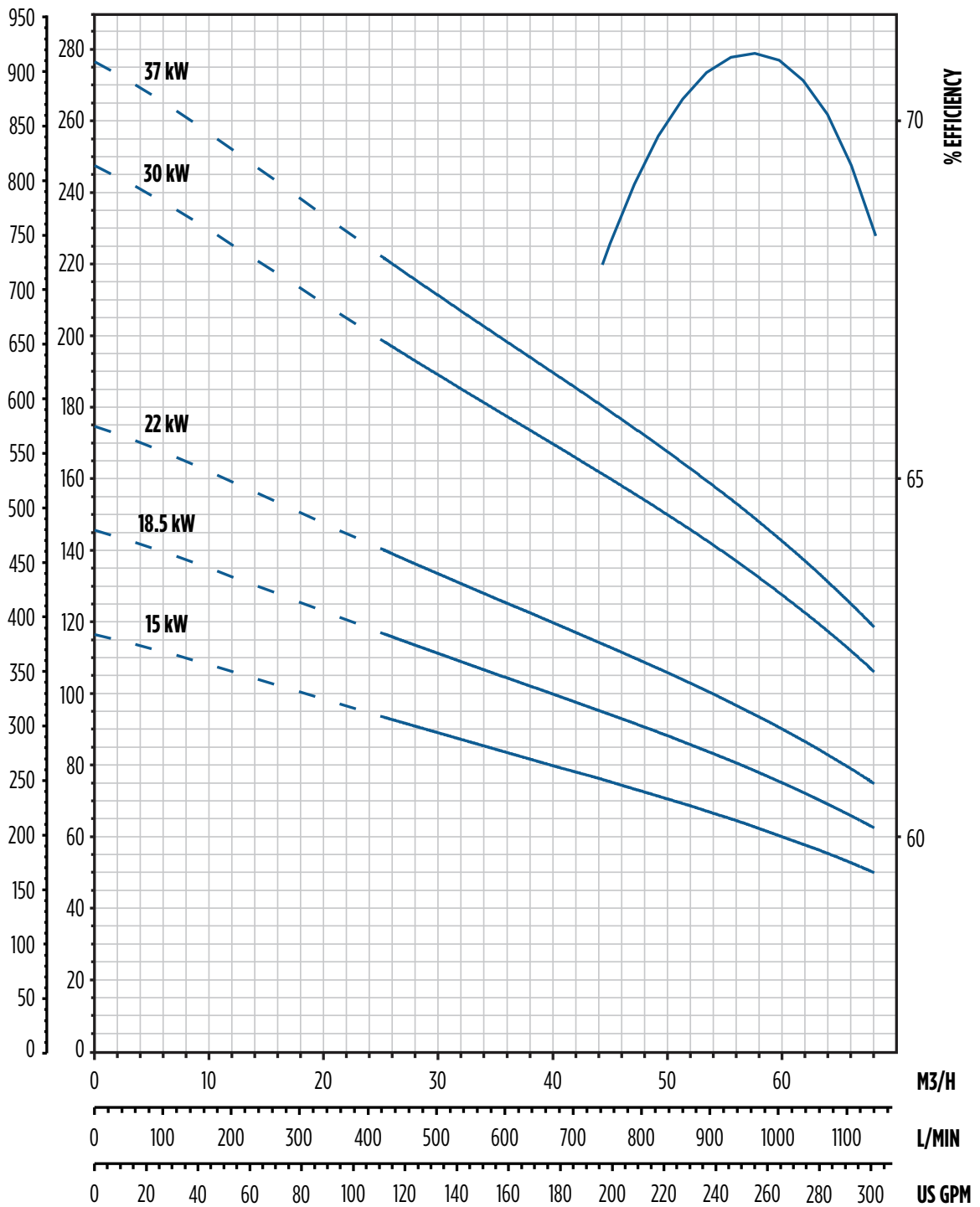
50 Hz 60STS SERIES Submersible Turbine Pumps

PERFORMANCE - 6" 60 M³/H

FEET METERS



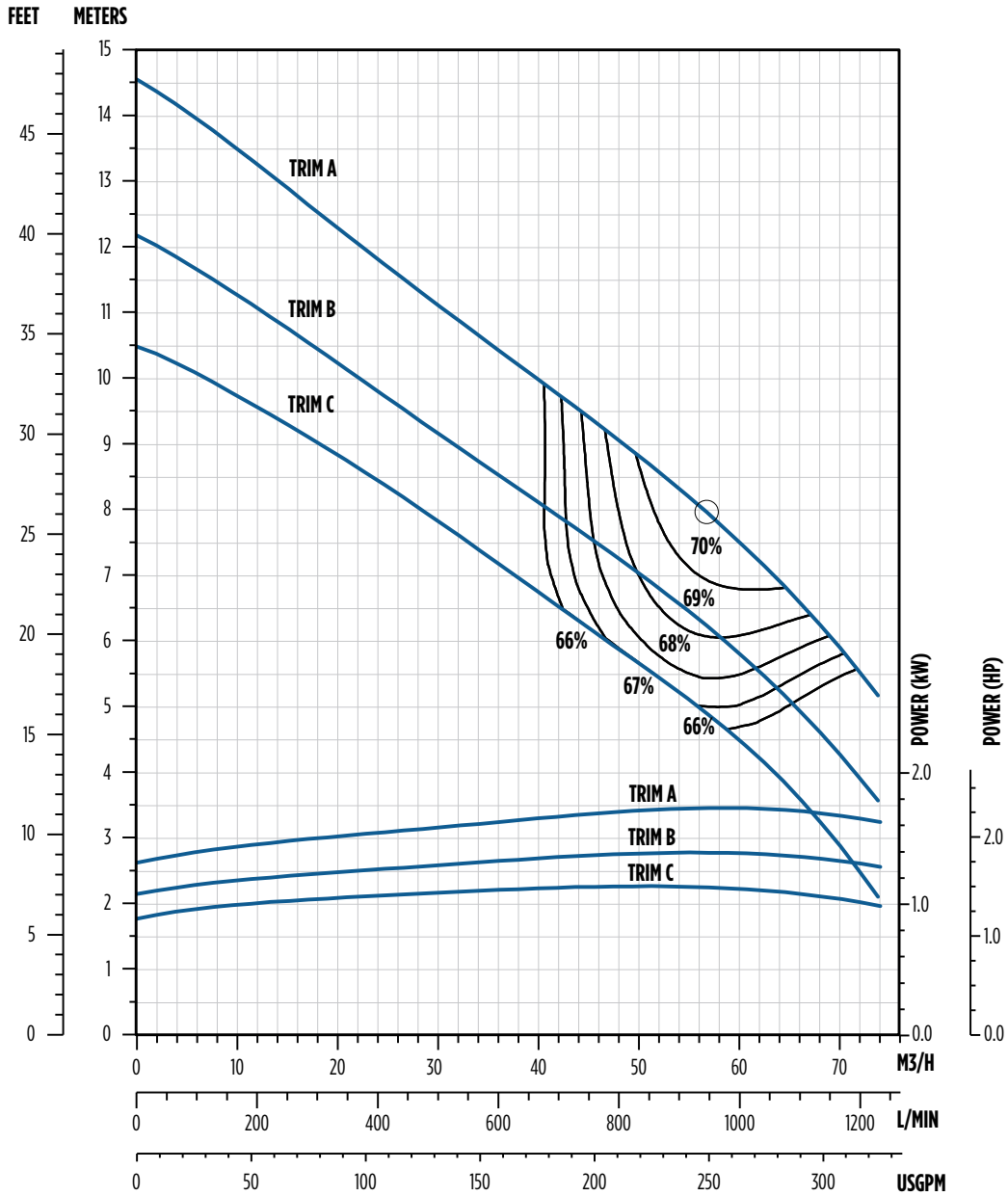
Note: Performance based on 68 °F / 20 °C fresh water, 6" motor at 2850 rpm

FEET METERS


Note: Performance based on 68 °F / 20 °C fresh water, 6" motor at 2850 rpm

50 Hz 60STS SERIES Submersible Turbine Pumps

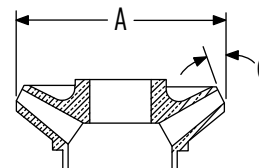
SINGLE-STAGE PERFORMANCE - 6" 60 M³/H



Note: Efficiencies are typical, not guaranteed. Efficiency correction required for low stage count (1 stage - 3%, 2 stage - 1%, 3 stage - 0%)
 Bowl #9 begins transition to double-bolted (8 bolts @ bottom, 14 bolts @ top)
 Nominal rpm: 2850

IMPELLER SPECS

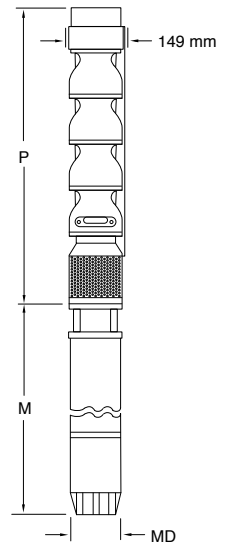
Trim	Diameter [mm]	C Angle
A	114.30	30 °
B	107.95	30 °
C	101.60	30 °



DIMENSIONS

M ³ /H	kW	Stages	Trim	Motor	P	M*	MD*	Motor Wt.	Pump Wt.
					mm	mm	mm	kg	kg
60	3.7	2	2A	6"	647	582	137	37.5	27.7
	5.5	3	3A		767	615		41.1	33.1
	7.5	4	4A		888	645		45.2	38.6
	9.3	5	5A		1009	679		47.5	44.0
	11	6	6A		1129	711		50.9	49.4
	15	8	8A		1371	777		56.7	59.9
	18.5	10	10A		1612	841		63.3	70.8
	22	12	12A		1853	907		69.3	81.6
	30	17	17A		2456	1036		83.9	108.4
	37	19	19A		2698	1405		138	119.3

Note: *MD diameter = Franklin Electric motor, M = Maximum length of Franklin Electric motor



ORDERING

M ³ /H	kW	Stages	Trim	Motor	Discharge	Order No.	Model No.	Ship Wt. [kg]
60	3.7	2	2A	6"	4" BSPP	97060060102	60STS3D6A-0264	33.1
	5.5	3	3A			97060060103	60STS5D6A-0364	39.5
	7.5	4	4A			97060060104	60STS7D6A-0464	44.9
	9.3	5	5A			97060060105	60STS9D6A-0564	51.3
	11	6	6A			97060060106	60STS11D6A-0664	56.7
	15	8	8A			97060060108	60STS15D6A-0864	68.0
	18.5	10	10A			97060060110	60STS18D6A-1064	91.6
	22	12	12A			97060060112	60STS22D6A-1264	107.0
	30	17	17A			97060060117	60STS30D6A-1764	137.9
	37	19	19A			97060060119	60STS37D6A-1964	151.5

SPECS

Minimum Well I.D.	6"
Minimum Submergence Above Inlet	3 meters
Discharge	4" BSPP
Maximum Working Pressure	Standard: 24.1 bar - Double Bolted: 46.5 bar

Note: Refer to Franklin Electric AIM data for motor cooling requirements.

MATERIALS

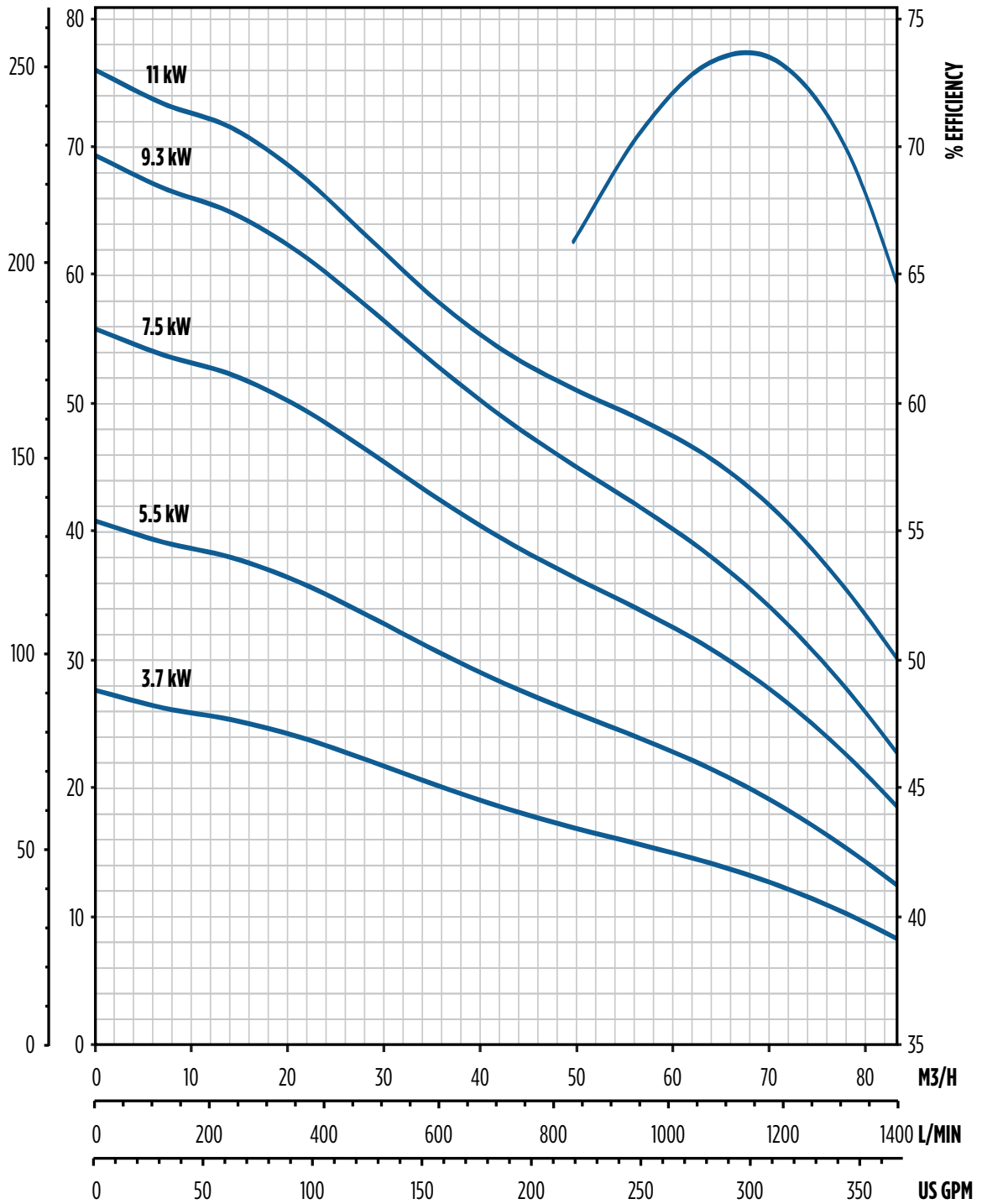
Part	Material	Specification No.
Discharge Bracket	Ductile Iron	ASTM A536 65-45-12
Top Bowl	Ductile Iron	ASTM A536 65-45-12
Intermediate Bowl	Ductile Iron	ASTM A536 65-45-12
Bearings, Discharge / Suction	Bronze	ASTM 8584 C89835
Impeller	304 Stainless Steel	ASTM A743/A743M CF8
Pump Shaft	416 Stainless Steel	ASTM A582 S41600
Suction Bracket	Ductile Iron	ASTM A536 65-45-12
Bowl Bearing	Rubber	
Sand Collar	300 Stainless Steel	ASTM A666
Suction Screen	302 Stainless Steel	ASTM A240 S30200
Cable Guard	300 Stainless Steel	ASTM A666
Shaft Coupling	416 Stainless Steel	ASTM A582 S41600
Upthrust Bolt	300 Stainless Steel	ASTM A666
Taper Lock	416 Stainless Steel	ASTM A582 S41600
Bolting	300 Stainless Steel	ASTM A666

Note: Bowl bearing and shaft options available. Contact customer service for available options.

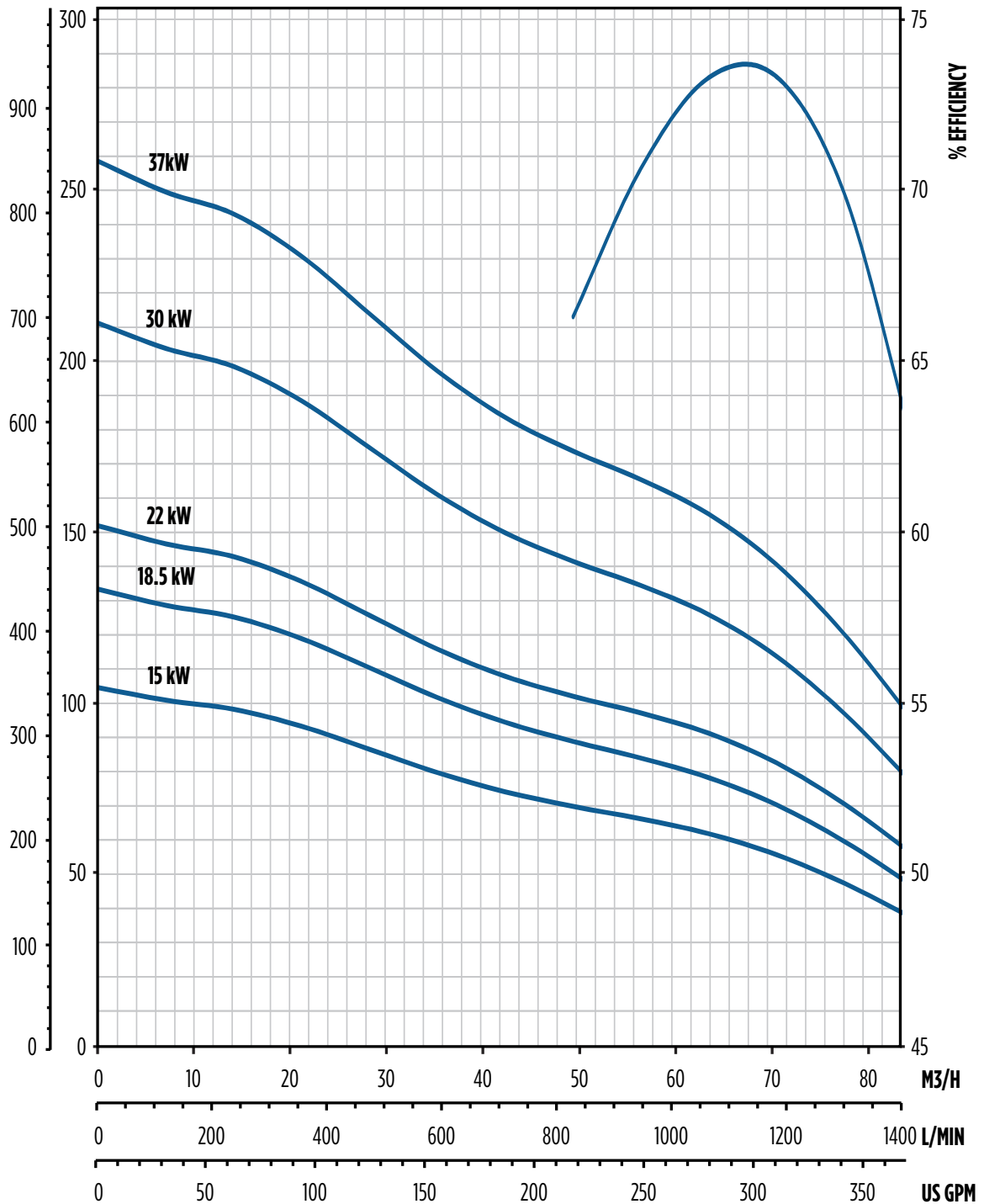
50 Hz 68STS SERIES Submersible Turbine Pumps

PERFORMANCE - 6" 68 M³/H

FEET METERS



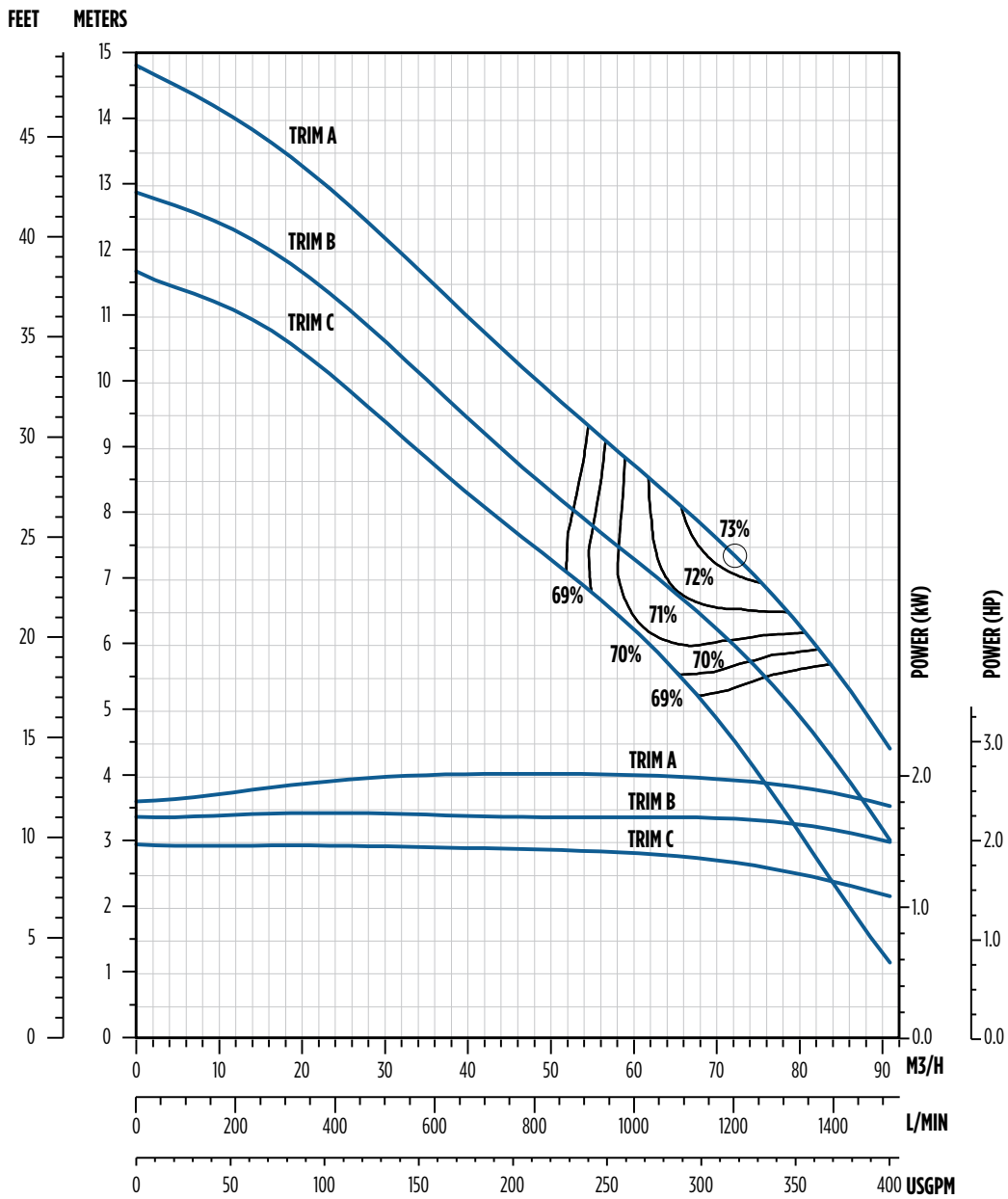
Note: Performance based on 68 °F / 20 °C fresh water, 6" motor at 2850 rpm

FEET METERS


Note: Performance based on 68 °F / 20 °C fresh water, 6" motor at 2850 rpm

50 Hz 68STS SERIES Submersible Turbine Pumps

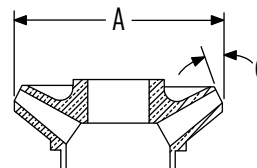
SINGLE-STAGE PERFORMANCE - 6" 68 M³/H



*Note: Efficiencies are typical, not guaranteed. Efficiency correction required for low stage count (1 stage - 3%, 2 stage - 1%, 3 stage - 0%)
 Bowl #9 begins transition to double-bolted (8 bolts @ bottom, 14 bolts @ top)
 Nominal rpm: 2850*

IMPELLER SPECS

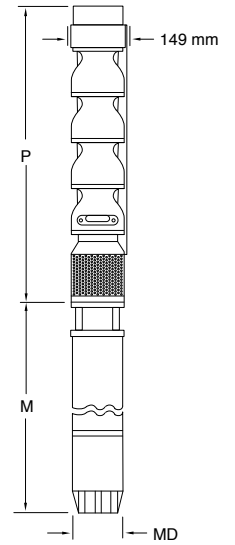
Trim	Diameter [mm]	C Angle
A	119.08	35°
B	112.78	35°
C	109.55	35°



DIMENSIONS

M ³ /H	kW	Stages	Trim	Motor	P	M*	MD*	Motor Wt.	Pump Wt.
					mm	mm	mm	kg	kg
68	3.7	2	2B	6"	647	582	137	37.5	27.2
	5.5	3	3B		767	615		41.1	32.7
	7.5	4	1A, 3B		888	645		45.2	37.6
	9.3	5	1A, 4B		1009	679		47.5	43.1
	11	5	5A		1009	711		50.9	43.1
	15	7	6A, 1B		1250	777		56.7	53.5
	18.5	9	7A, 2B		1491	841		63.3	63.5
	22	10	10A		1612	907		69.3	68.9
	30	14	13A, 1B		2095	1036		83.9	89.8
	37	17	17A		2456	1405		138	105.2

Note: *MD diameter = Franklin Electric motor, M = Maximum length of Franklin Electric motor



ORDERING

M ³ /H	kW	Stages	Trim	Motor	Discharge	Order No.	Model No.	Ship Wt. [kg]
68	3.7	2	2B	6"	4" BSPP	97060068102	68STS3D6B-0264	33.1
	5.5	3	3B			97060068103	68STS5D6B-0364	39.1
	7.5	4	1A, 3B			97060068104	68STS7D6X-0464	43.9
	9.3	5	1A, 4B			97060068105	68STS9D6X-0564	51.4
	11	5	5A			97060068205	68STS11D6A-0564	51.4
	15	7	6A, 1B			97060068107	68STS15D6X-0764	61.7
	18.5	9	7A, 2B			97060068109	68STS18D6X-0964	84.4
	22	10	10A			97060068110	68STS22D6X-1064	89.8
	30	14	13A, 1B			97060068114	68STS30D6X-1464	119.3
	37	17	17A			97060068117	68STS37D6A-1764	137.4

SPECS

Minimum Well I.D.	6"
Minimum Submergence Above Inlet	3 meters
Discharge	4" BSPP
Maximum Working Pressure	Standard: 24.1 bar - Double Bolted: 46.5 bar

Note: Refer to Franklin Electric AIM data for motor cooling requirements.

MATERIALS

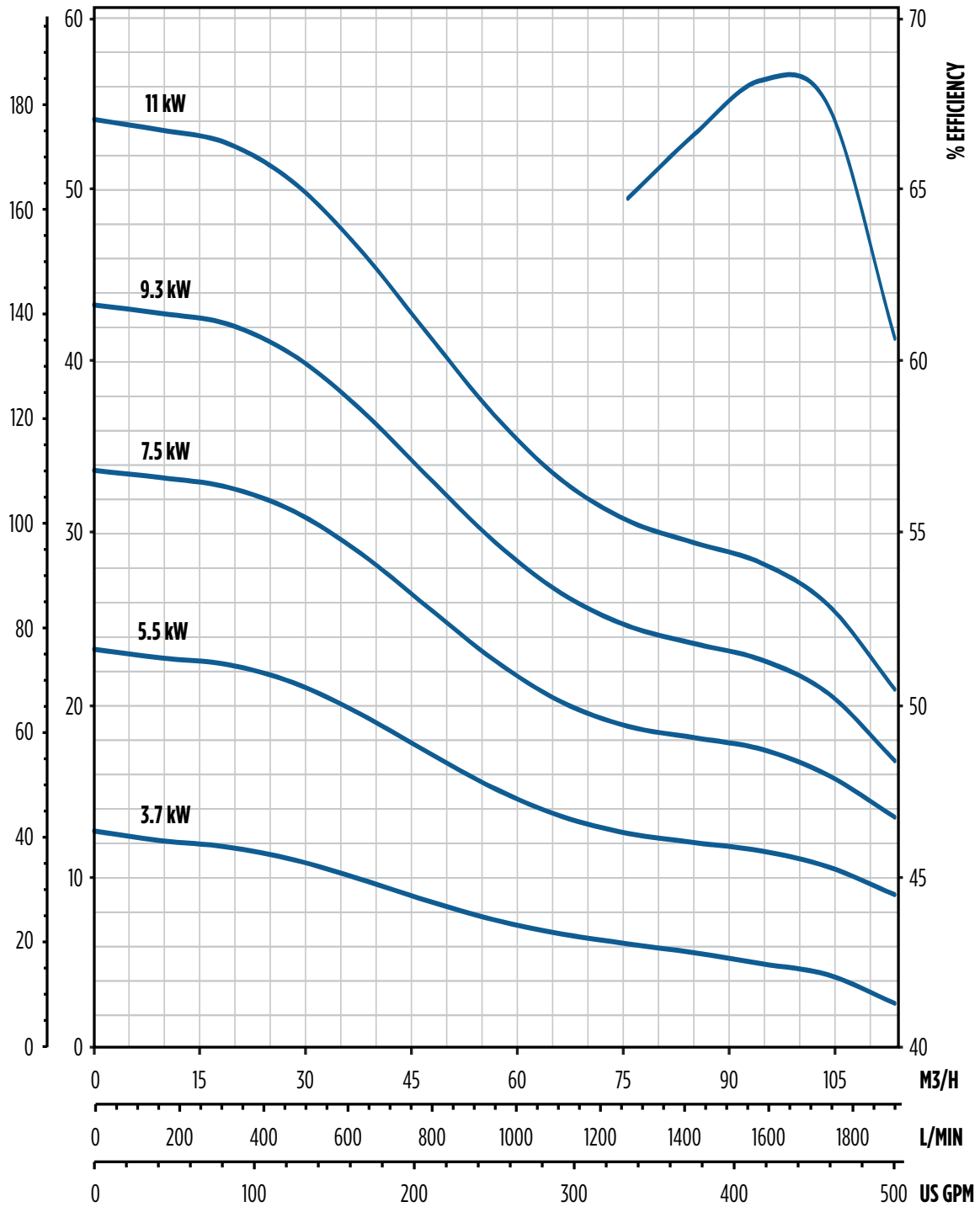
Part	Material	Specification No.
Discharge Bracket	Ductile Iron	ASTM A536 65-45-12
Top Bowl	Ductile Iron	ASTM A536 65-45-12
Intermediate Bowl	Ductile Iron	ASTM A536 65-45-12
Bearings, Discharge / Suction	Bronze	ASTM 8584 C89835
Impeller	304 Stainless Steel	ASTM A743/A743M CF8
Pump Shaft	416 Stainless Steel	ASTM A582 S41600
Suction Bracket	Ductile Iron	ASTM A536 65-45-12
Bowl Bearing	Rubber	Rubber
Sand Collar	300 Stainless Steel	ASTM A666
Suction Screen	302 Stainless Steel	ASTM A240 S30200
Cable Guard	300 Stainless Steel	ASTM A666
Shaft Coupling	416 Stainless Steel	ASTM A582 S41600
Upthrust Bolt	300 Stainless Steel	ASTM A666
Taper Lock	416 Stainless Steel	ASTM A582 S41600
Bolting	300 Stainless Steel	ASTM A666

Note: Bowl bearing and shaft options available. Contact customer service for available options.

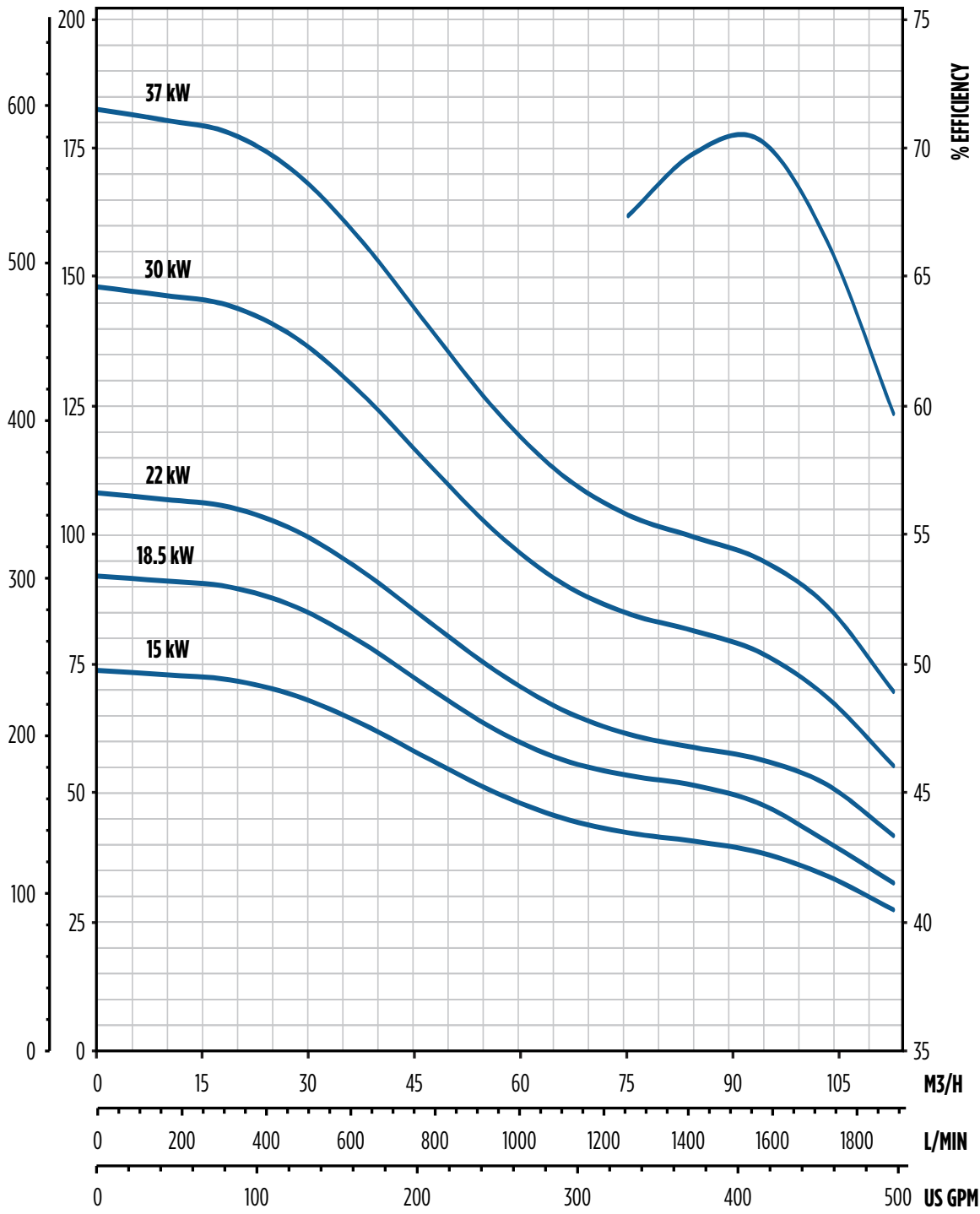
50 Hz 90STS SERIES Submersible Turbine Pumps

PERFORMANCE - 6" 90 M³/H

FEET METERS



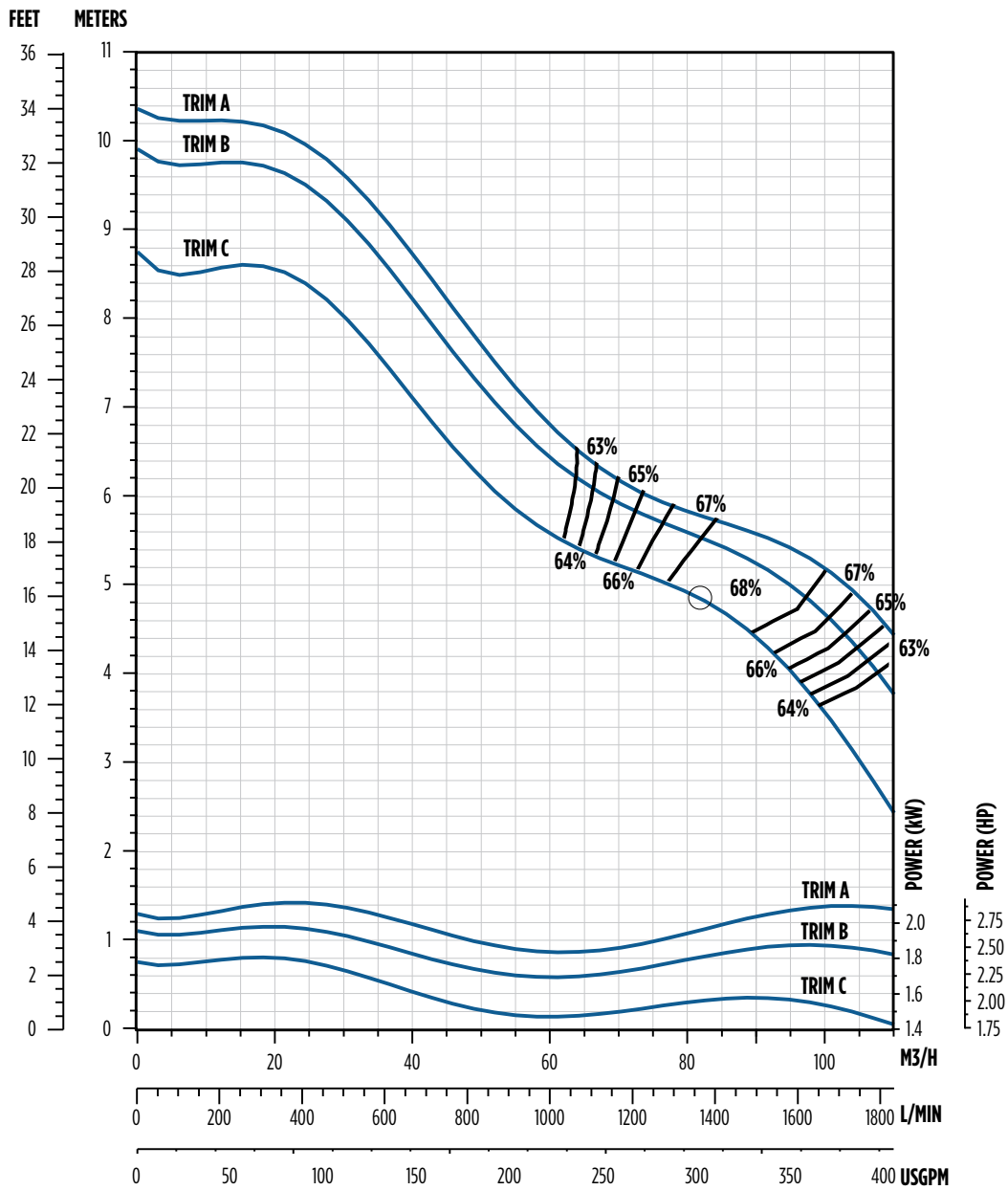
Note: Performance based on 68 °F / 20 °C fresh water, 6" motor at 2850 rpm

FEET METERS


Note: Performance based on 68 °F / 20 °C fresh water, 6" motor at 2850 rpm

50 Hz 90STS SERIES Submersible Turbine Pumps

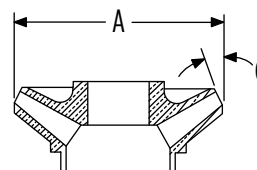
SINGLE-STAGE PERFORMANCE - 6" 90 M³/H



Note: Efficiencies are typical, not guaranteed. Efficiency correction required for low stage count (1 stage - 3%, 2 stage - 1%, 3 stage - 0%)
 Bowl #9 begins transition to double-bolted (8 bolts @ bottom, 14 bolts @ top)
 Nominal rpm: 2850

IMPELLER SPECS

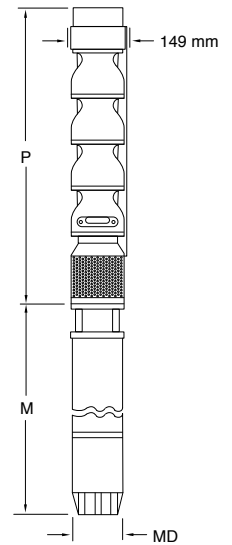
Trim	Diameter [mm]	C Angle
A	116.84	32°
B	113.67	32°
C	108.92	32°



DIMENSIONS

M ³ /H	kW	Stages	Trim	Motor	P	M*	MD*	Motor Wt.	Pump Wt.
					mm	mm	mm	kg	kg
90	3.7	1	1A	6"	541	582	137	37.5	23.6
	5.5	2	2A		677	615		41.1	29.5
	7.5	3	3A		813	645		45.2	36.3
	9.3	4	4A		949	679		47.5	42.6
	11	5	5A		1085	711		50.9	49
	15	7	4A, 3B		1357	777		56.7	62.1
	18.5	9	1A, 8B		1629	841		63.3	74.4
	22	10	10A		1765	907		69.3	81.2
	30	14	9A, 5B		2308	1036		83.9	107
	37	17	15A, 2B		2716	1406		138	126.1

Note: *MD diameter = Franklin Electric motor, M = Maximum length of Franklin Electric motor



ORDERING

M ³ /H	kW	Stages	Trim	Motor	Discharge	Order No.	Model No.	Ship Wt. [kg]
90	3.7	1	1A	6"	4" BSPP	97060090101	90STS3D6A-0164	29
	5.5	2	2A			97060090102	90STS5D6A-0264	34.9
	7.5	3	3A			97060090103	90STS7D6A-0364	41.7
	9.3	4	4A			97060090104	90STS9D6A-0464	49
	11	5	5A			97060090105	90STS11D6A-0564	55.3
	15	7	4A, 3B			97060090107	90STS15D6X-0764	69.4
	18.5	9	1A, 8B			97060090109	90STS18D6X-0964	95.3
	22	10	10A			97060090110	90STS22D6A-1064	102.1
	30	14	9A, 5B			97060090114	90STS30D6X-1464	136.5
	37	17	15A, 2B			97060090117	90STS37D6X-1764	158.3

SPECS

Minimum Well I.D.	6"
Minimum Submergence Above Inlet	3 meters
Discharge	4" BSPP
Maximum Working Pressure	Standard: 24.1 bar - Double Bolted: 46.5 bar

Note: Refer to Franklin Electric AIM data for motor cooling requirements.

MATERIALS

Part	Material	Specification No.
Discharge Bracket	Ductile Iron	ASTM A536 65-45-12
Top Bowl	Ductile Iron	ASTM A536 65-45-12
Intermediate Bowl	Ductile Iron	ASTM A536 65-45-12
Bearings, Discharge / Suction	Bronze	ASTM 8584 C89835
Impeller	304 Stainless Steel	ASTM A743/A743M CF8
Pump Shaft	416 Stainless Steel	ASTM A582 S41600
Suction Bracket	Ductile Iron	ASTM A536 65-45-12
Bowl Bearing	Rubber	
Sand Collar	300 Stainless Steel	ASTM A666
Suction Screen	302 Stainless Steel	ASTM A240 S30200
Cable Guard	300 Stainless Steel	ASTM A666
Shaft Coupling	416 Stainless Steel	ASTM A582 S41600
Upthrust Bolt	300 Stainless Steel	ASTM A666
Taper Lock	416 Stainless Steel	ASTM A582 S41600
Bolting	300 Stainless Steel	ASTM A666

Note: Bowl bearing and shaft options available. Contact customer service for available options.



Franklin Electric

Franklin Electric (Aust) Pty Ltd
106-110 Micro Circuit
Dandenong South, Vic 3175
Tel: +61 3 9799 5000

Toll Free: 1300 FRANKLIN
1300 372 655

franklinwater.com/au

UNITED STATES

Franklin Electric Co., Inc.
9255 Coverdale Road, Fort Wayne, IN 46809
Tel: +1.260.824.2900 Fax: +1.260.824.2909