

FPS
FS series

**316
Stainless Steel
Submersible Pumps**

8"

10"

12"



Stainless Steel Submersible Pumps

40 to 540 m³/h



The FS Series pumps have been engineered in all AISI 316 stainless steel for efficient and reliable pumping of liquids in marine, residential, municipal, industrial and agricultural applications.

- 8": 100 and 130 m³/h
- 10": 180 and 200 m³/h
- 12": 260, 300 and 400 m³/h

Features:

- 100% factory tested
- Stainless Steel AISI 316 discharge and suction bracket
- Stainless Steel AISI 316 bowls
- 8", 10" and 12" sizes
- Stainless Steel impellers and diffusers
- Impellers locked onto shaft with keys
- Rubber bearings
- Integrated Non Return valve on all models
- Stainless Steel 329 duplex pump shaft for increased durability
- All pumps suit Franklin Electric motors
- Flanged and BSPP discharges
- Maximum running time at zero delivery is 2 minutes

Model Number Explanation

Example: 300 FS 12 - 5 A - 5 12 250

300 = Flow in m³/hr

FS = Series

12 = Pump End

5 = Stages

A = Trim

5 = 50 Hz

12 = Motor size

250 = 250 kW

8" FPS-FS 50 Hz Submersible Turbine Pump

Ordering Information

M ³ /H	Model	kW	HP	Stages	Trim	Motor	Discharge	ORDER No.	Build No
100	FPS-100FS-2A	15	20	2	A	6"	125	96508100605	100FS08-2A-506015
	FPS-100FS-3B	18.5	25	3	B	6"	125	96508100610	100FS08-3B-506018
	FPS-100FS-3A	22	30	3	A	6"	125	96508100615	100FS08-3A-506022
	FPS-100FS-5C	30	40	5	C	6"	125	96508100620	100FS08-5C-506030
	FPS-100FS-6C	37	50	6	C	8"	125	96508100625	100FS08-6C-508037
	FPS-100FS-7B	45	60	7	B	8"	125	96508100630	100FS08-7B-508045
	FPS-100FS-7B	55	75	7	B	8"	125	96508100635	100FS08-7B-508055
	FPS-100FS-12C	75	100	12	C	8"	125	96508100640	100FS08-12C-508075
	FPS-100FS-15D	93	125	15	D	8"	125	96508100645	100FS08-15D-508093
	FPS-100FS-16C	110	150	16	C	8"	125	96508100655	100FS08-16C-508110
130	FPS-130FS-2E	15	20	2	E	6"	125	96508130605	130FS08-2E-506015
	FPS-130FS-2A	18.5	25	2	A	6"	125	96508130610	130FS08-2A-506018
	FPS-130FS-3E	22	30	3	E	6"	125	96508130615	130FS08-3E-506022
	FPS-130FS-4E	30	40	4	E	6"	125	96508130620	130FS08-4E-506030
	FPS-130FS-4C	37	50	4	C	8"	125	96508130625	130FS08-4C-508037
	FPS-130FS-5C	45	60	5	C	8"	125	96508130630	130FS08-5C-508045
	FPS-130FS-6A	55	75	6	A	8"	125	96508130635	130FS08-6A-508055
	FPS-130FS-8A	75	100	8	A	8"	125	96508130640	130FS08-8A-508075
	FPS-130FS-10C	93	125	10	C	8"	125	96508130645	130FS08-10C-508093
	FPS-130FS-12C	110	150	12	C	8"	125	96508130645	130FS08-12A-508110

10" FPS-FS 50 Hz Submersible Turbine Pump

Ordering Information

M ³ /H	Model	kW	HP	Stages	Trim	Motor	Discharge	ORDER No.	Build No
180	FPS-18-FS-1I	18.5	25	1	I	6"	150	96510180605	180FS10-1I-506018
	FPS-180FS-1D	22	30	1	D	6"	150	96510180610	180FS10-1D-506022
	FPS-180FS-2O	30	40	2	O	6"	150	96510180612	180FS10-2O-506030
	FPS-180FS-2H	37	50	2	H	8"	150	96510180615	180FS10-2H-508037
	FPS-180FS-2C	45	60	2	C	8"	150	96510180620	180FS10-2C-508045
	FPS-180FS-3H	55	75	3	H	8"	150	96510180630	180FS10-3H-508055
	FPS-180FS-4G	75	100	4	G	8"	150	96510180635	180FS10-4G-508075
	FPS-180FS-4B	93	125	4	B	8"	150	96510180640	180FS10-4B-508093
	FPS-180FS-5D	110	150	5	D	10"	150	96510180645	180FS10-5D-510110
	FPS-180FS-6D	130	175	6	D	10"	150	96510180650	180FS10-6D-510130
	FPS-180FS-7E	150	200	7	E	10"	150	96510180655	180FS10-7E-510150
	FPS-180FS-9F	185	250	9	F	10"	150	96510180660	180FS10-9F-508185

200	FPS-200FS-1D	18.5	25	1	D	6"	150	96510200605	200FS10-1D-506018
	FPS-200FS-2H	30	40	2	H	6"	150	96510200610	200FS10-2H-508030
	FPS-200FS-2D	37	50	2	D	8"	150	96510200615	200FS10-2D-508037
	FPS-200FS-3I	45	60	3	I	8"	150	96510200620	200FS10-3I-508045
	FPS-200FS-3D	55	75	3	D	8"	150	96510200625	200FS10-3D-508055
	FPS-200FS-4C	75	100	4	C	8"	150	96510200630	200FS10-4C-508075
	FPS-200FS-5E	93	125	5	E	10"	150	96510200635	200FS10-5E-508093
	FPS-200FS-6D	110	150	6	D	10"	150	96510200640	200FS10-6D-510110
	FPS-200FS-7C	130	175	7	C	10"	150	96510200645	200FS10-7C-510130
	FPS-200FS-8C	150	200	8	C	10"	150	96510200650	200FS10-8C-510150
	FPS-200FS-10C	185	250	10	C	10"	150	96510200655	200FS10-10C-510185

12" FPS-FS 50 Hz Submersible Turbine Pump

Ordering Information

M ³ /H	Model	kW	HP	Stages	Trim	Motor	Discharge	ORDER No.	Build No
260	FPS-260FS-1D	30	40	1	D	6"	150	96510260605	260FS10-1D-506030
	FPS-260FS-2P	37	50	2	P	8"	150	96510260610	260FS10-2P-508037
	FPS-260FS-2I	45	60	2	I	8"	150	96510260615	260FS10-2I-508045
	FPS-260FS-2C	55	75	2	C	8"	150	96510260620	260FS10-2C-508055
	FPS-260FS-3E	75	100	3	E	8"	150	96510260625	260FS10-3E-508075
	FPS-260FS-4G	93	125	4	G	8"	150	96510260630	260FS10-4G-508093
	FPS-260FS-4C	110	150	4	C	10"	150	96510260635	260FS10-4C-510110
	FPS-260FS-5D	130	175	5	D	10"	150	96510260640	260FS10-5D-510130
	FPS-260FS-6D	150	200	6	D	10"	150	96510260645	260FS10-6D-510150
	FPS-260FS-7D	185	250	7	D	10"	150	96510260650	260FS10-7D-510185
300	FPS-300FS-1B	45	60	1	B	8"	175	96512300605	300FS12-1B-508045
	FPS-300FS-1B	55	75	1	B	8"	175	96512300610	300FS12-1B-508055
	FPS-300FS-2C	75	100	2	C	8"	175	96512300615	300FS12-2C-508075
	FPS-300FS-2B	93	125	2	B	8"	175	96512300620	300FS12-2B-508093
	FPS-300FS-2A	110	150	2	A	10"	175	96512300625	300FS12-2A-510110
	FPS-300FS-3B	130	175	3	B	10"	175	96512300630	300FS12-3B-510130
	FPS-300FS-3A	150	200	3	A	10"	175	96512300635	300FS12-3A-508150
	FPS-300FS-4A	185	250	4	A	12"	175	96512300640	300FS12-4A-510185
	FPS-300FS-5B	220	300	5	B	12"	175	96512300645	300FS12-5B-512220
	FPS-300FS-5A	250	340	5	A	12"	175	96512300650	300FS12-5A-512250
400	FPS-400FS-1B	45	60	1	B	8"	175	96512400605	400FS12-1B-508045
	FPS-400FS-1A	55	75	1	A	8"	175	96512400610	400FS12-1A-508055
	FPS-400FS-2B	93	125	2	B	8"	175	96512400615	400FS12-2B-508093
	FPS-400FS-2A	110	150	2	A	10"	175	96512400620	400FS12-2A-508110
	FPS-400FS-3B	130	175	3	B	10"	175	96512400625	400FS12-3B-508130
	FPS-400FS-3A	150	200	3	A	10"	175	96512400630	400FS12-3A-508150
	FPS-400FS-4B	185	250	4	B	12"	175	96512400635	400FS12-4B-510185
	FPS-400FS-4A	220	300	4	A	12"	175	96512400640	400FS12-4A-512220
	FPS-400FS-5A	250	340	5	A	12"	175	96512400645	400FS12-5A-512250

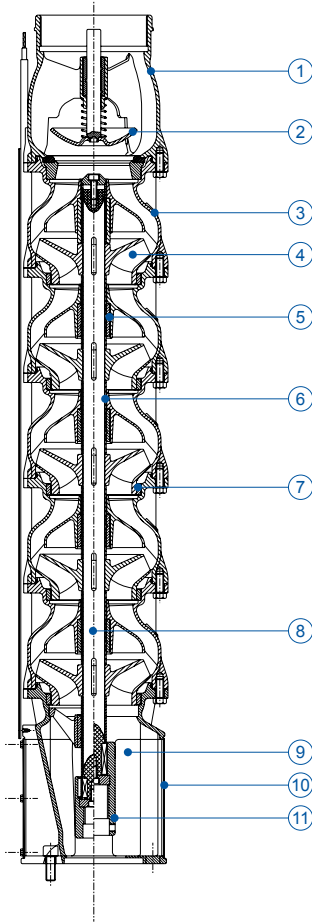
Notes

FPS-FS 50 Hz Submersible Turbine Pump

Part and material specifications

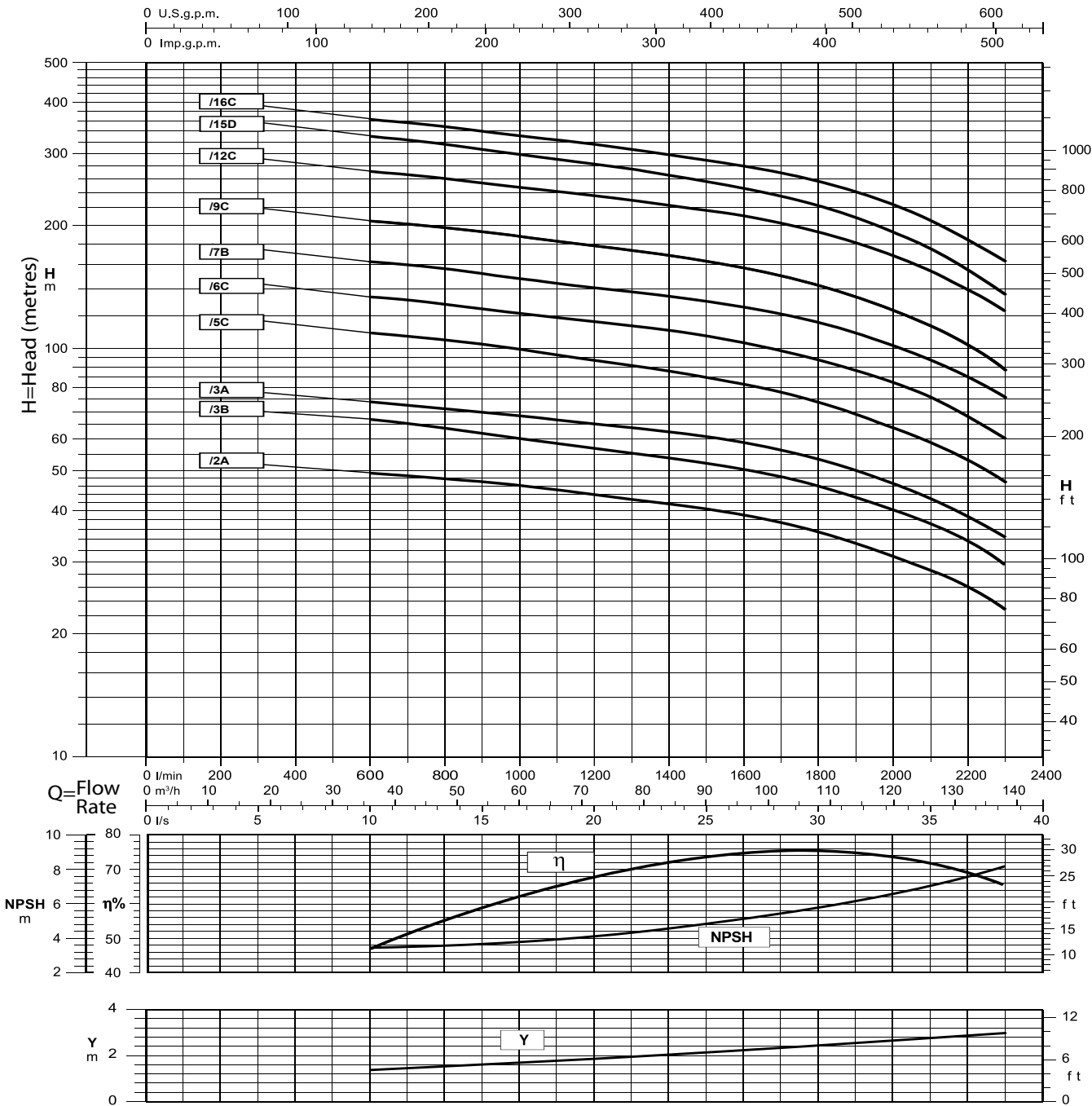
Item	Part name	Material
1	Delivery Bowl	316 Stainless Steel
2	Retaining Valve	316 Stainless Steel
3	Diffuser	316 Stainless Steel
4	Impeller	316 Stainless Steel
5	Journal Bearing	PTFE
6	Spacer Bushing	316 Stainless Steel
7	Wear Ring	POM
8	Shaft	329 Stainless Steel
9	Suction Bowl	316 Stainless Steel
10	Intake Screen	316 Stainless Steel
11	Coupling	316 Stainless Steel

FS Series



8" Stainless Steel

FPS-100FS Performance Curve – 50Hz



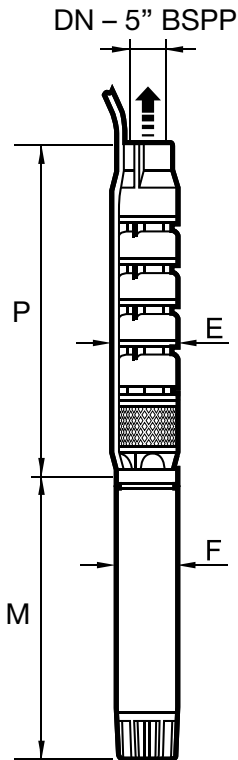
Notes:

- 1 = η Pump Efficiency, NPSH (metres), Y = Non return valve loss
- 2 = Curves based on density of 1000 kg/m³, viscosity of 1mm²/s, Temperature at 20°C

FPS-100FS

Performance and Dimensional Information

Build No.	kW	HP	Head (m)														
			l/min	0	600	1100	1300	1500	1600	1700	1800	1900	2000	2100	2200	2300	
			m3/h	0	36	66	78	90	96	102	108	114	120	126	132	138	
			l/s	0	10	18	22	25	27	28	30	32	33	35	37	38	
FPS-100FS08-2A-506015	15	20	58	50	45	43	41	39	38	36	34	31	29	26	23		
FPS-100FS08-3B-506018	18.5	25	77	67	59	56	53	51	49	46	43	41	37	34	30		
FPS-100FS08-3A-506022	22	30	86	75	67	64	61	59	56	53	50	47	43	39	35		
FPS-100FS08-5C-506030	30	40	134	109	96	91	85	82	79	74	70	65	60	54	47		
FPS-100FS08-6C-508037	37	50	166	135	119	113	107	103	99	94	89	83	76	69	60		
FPS-100FS08-7B-508045	45	60	200	162	144	138	130	126	121	116	109	102	94	85	76		
FPS-100FS08-9C-508055	55	75	251	204	181	173	163	157	151	143	134	125	114	102	88		
FPS-100FS08-12C-508075	75	100	335	272	241	230	217	210	202	192	181	168	155	139	123		
FPS-100FS08-15D-508093	93	125	405	331	289	273	256	246	235	222	208	192	175	157	137		
FPS-100FS08-16C-508110	110	150	446	362	321	307	290	280	269	256	241	224	206	186	163		

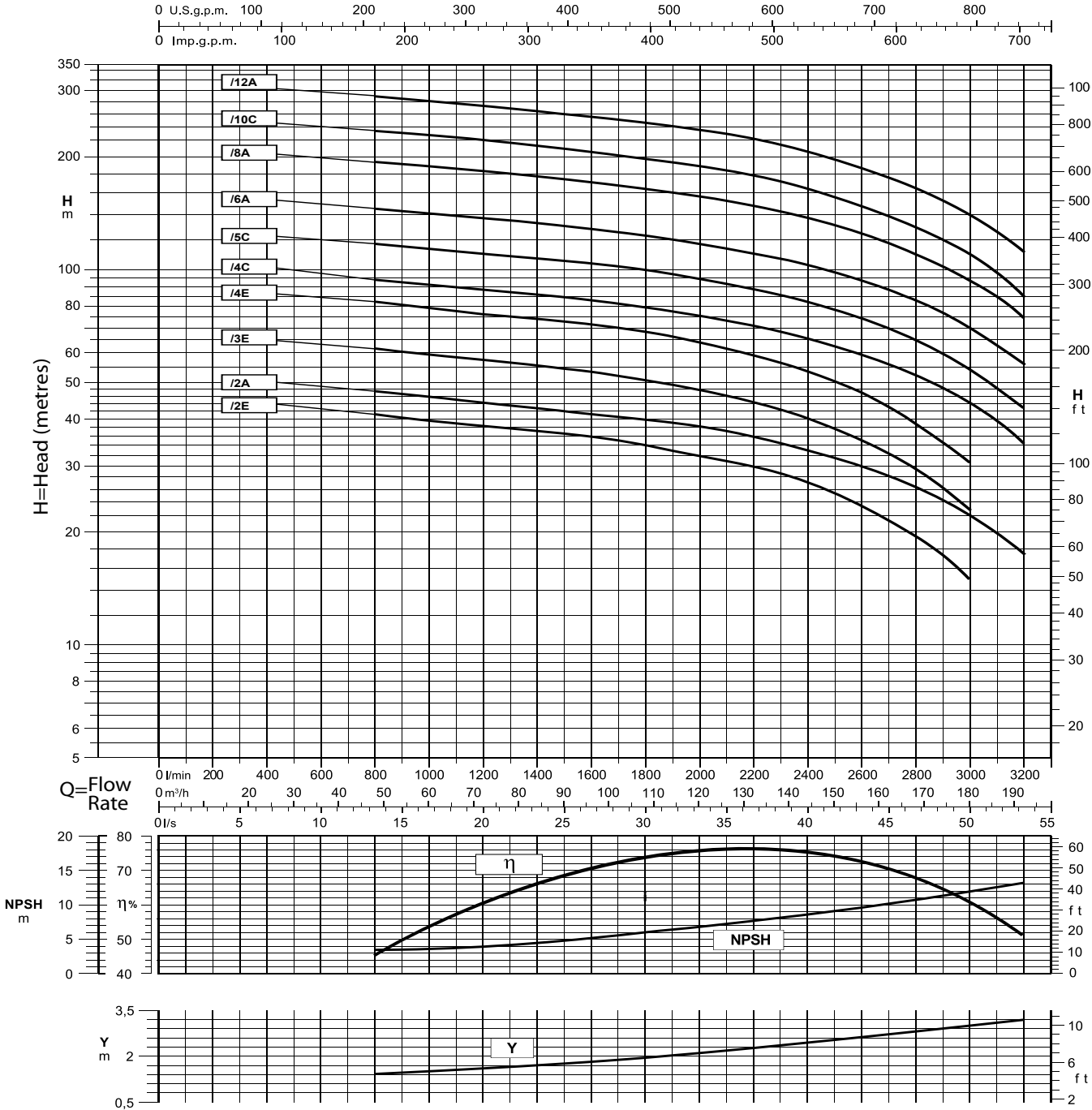


Model	P	M	DN	E _{max}	F	Weight (kg)	Order No.
FPS-100FS08-2A	687	*	5"	200	142	30	96508100605
FPS-100FS08-3B	823	*	5"	200	142	38	96508100610
FPS-100FS08-3A	823	*	5"	200	142	38	96508100615
FPS-100FS08-5C	1095	*	5"	200	142	54	96508100620
FPS-100FS08-6C	1231	*	5"	200	190	63	96508100625
FPS-100FS08-7B	1367	*	5"	200	190	71	96508100630
FPS-100FS08-9C	1639	*	5"	200	190	86	96508100635
FPS-100FS08-12C	2047	*	5"	200	190	110	96508100640
FPS-100FS08-15D	2455	*	5"	200	190	133	96508100645
FPS-100FS08-16C	2591	*	5"	200	190	140	96508100655

- Notes:**
- Dimensions in millimetres
 - Refer to Franklin motor brochure for data
 - DN = 5" BSPP

8" Stainless Steel

FPS-130FS Performance Curve – 50Hz



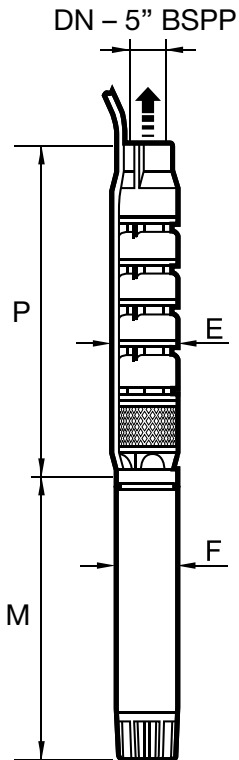
Notes:

- 1 = η Pump Efficiency, NPSH (metres), Y = Non return valve loss
- 2 = Curves based on density of 1000 kg/m³, viscosity of 1mm²/s, Temperature at 20°C

FPS-130FS

Performance and Dimensional Information

Build No.	kW	HP	Head (m)															
			l/min	0	800	1600	1700	1800	1900	2000	2200	2400	2600	2800	3000	3200		
			m ³ /h	0	48	96	102	108	114	120	132	144	156	168	180	192		
			l/s	0	13	27	28	30	32	33	37	40	43	47	50	53		
FPS-130FS08-2E-506015	15	20	48	41	36	35	34	33	32	30	27	24	20	15				
FPS-130FS08-2A-506018	18.5	25	57	48	42	41	40	39	38	36	33	30	27	22	18			
FPS-130FS08-3E-506022	22	30	72	62	54	53	51	50	48	45	41	35	30	23				
FPS-130FS08-4E-506030	30	40	96	82	72	70	68	66	64	60	54	47	39	31				
FPS-130FS08-4C-508037	37	50	111	94	83	81	80	78	76	72	66	60	53	44	35			
FPS-130FS08-5C-508045	45	60	136	118	104	102	100	97	95	89	82	74	65	55	43			
FPS-130FS08-6A-508055	55	75	168	145	129	126	124	121	118	111	103	93	83	70	56			
FPS-130FS08-8A-508075	75	100	224	194	171	168	165	161	157	148	137	125	110	94	75			
FPS-130FS08-10C-508093	93	125	272	235	207	203	199	194	189	178	164	148	130	109	85			
FPS-130FS08-12A-508110	110	150	335	290	257	252	247	241	235	222	206	187	165	140	112			



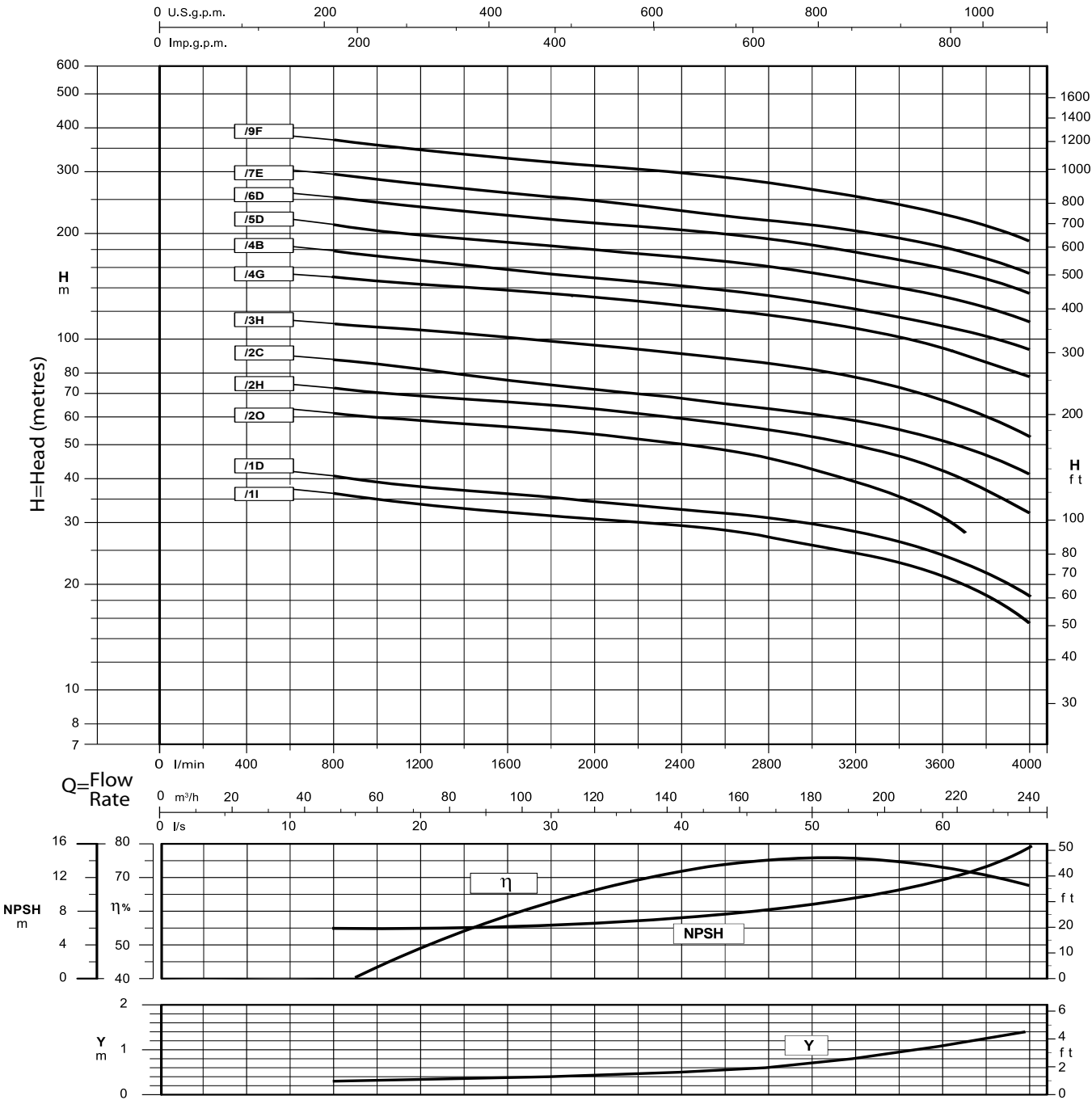
Model	P	M	DN	E max	F	Weight (kg)	Order No.
FPS-130FS08-2E	687	*	5"	200	142	30	96508130605
FPS-130FS08-2A	687	*	5"	200	142	30	96508130610
FPS-130FS08-3E	823	*	5"	200	142	37	96508130615
FPS-130FS08-4E	959	*	5"	200	142	44	96508130620
FPS-130FS08-4C	959	*	5"	200	190	46	96508130625
FPS-130FS08-5C	1095	*	5"	200	190	53	96508130630
FPS-130FS08-6A	1231	*	5"	200	190	61	96508130635
FPS-130FS08-8A	1503	*	5"	200	190	75	96508130640
FPS-130FS08-10C	1775	*	5"	200	190	90	96508130645
FPS-130FS08-12A	2047	*	5"	200	190	105	96508130645

- Notes:**
1. Dimensions in millimetres
 2. Refer to Franklin motor brochure for data
 3. DN = 5" BSPP



10" Stainless Steel

FPS-180FS Performance Curve – 50Hz



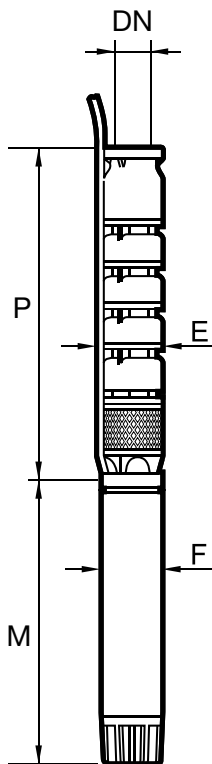
Notes:

- 1 = η Pump Efficiency, NPSH (metres), Y = Non return valve loss
- 2 = Curves based on density of 1000 kg/m³, viscosity of 1mm²/s, Temperature at 20°C

FPS-180FS

Performance and Dimensional Information

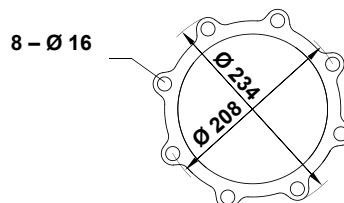
Build No.	kW	HP	Head (m)															
			l/min	0	800	1200	1600	1900	2200	2500	2800	3000	3200	3400	3700	4000		
			m ³ /h	0	48	72	96	114	132	150	168	180	192	204	222	240		
			l/s	0	13	20	36	32	37	42	47	50	53	57	62	67		
FPS-180FS10-1I-506018	18.5	25	43	36	34	32	31	30	29	28	26	25	23	20	16			
FPS-180FS10-1D-506022	22	30	50	41	38	36	35	34	33	31	30	28	27	23	19			
FPS-180FS10-2O-506030	30	40	73	62	59	56	55	52	50	46	44	40	36	28				
FPS-180FS10-2H-508037	37	50	84	73	69	66	64	62	59	56	53	50	47	40	32			
FPS-180FS10-2C-508045	45	60	106	88	82	77	74	70	67	64	62	59	56	49	41			
FPS-180FS10-3H-508055	55	75	127	111	106	101	98	95	91	86	83	78	73	64	53			
FPS-180FS10-4G-508075	75	100	173	151	144	138	134	129	124	117	113	107	101	91	79			
FPS-180FS10-4B-508093	93	125	213	180	168	159	152	146	140	133	129	123	117	107	95			
FPS-180FS10-5D-510110	110	150	249	212	200	189	182	176	169	161	156	149	141	128	113			
FPS-180FS10-6D-510130	130	175	300	255	240	227	219	211	203	193	187	179	169	154	136			
FPS-180FS10-7E-510150	150	200	345	294	277	262	252	243	233	223	215	205	195	176	155			
FPS-180FS10-9F-510185	185	250	435	369	347	329	317	305	292	279	269	256	242	219	191			



Model	P	M	DN	E max	F	Weight (kg)	Order No.
FPS-180FS10-1I	687	*	150	238	142	47	96510180605
FPS-180FS10-1D	687	*	150	238	142	47	96510180610
FPS-180FS10-2O	867	*	150	238	142	64	96510180612
FPS-180FS10-2H	867	*	150	238	190	64	96510180615
FPS-180FS10-2C	867	*	150	238	190	64	96510180620
FPS-180FS10-3H	1047	*	150	238	190	80	96510180630
FPS-180FS10-4G	1227	*	150	238	190	96	96510180635
FPS-180FS10-4B	1227	*	150	238	190	96	96510180640
FPS-180FS10-5D	1490	*	150	238	237	121	96510180645
FPS-180FS10-6D	1670	*	150	238	237	137	96510180650
FPS-180FS10-7E	1850	*	150	243	237	153	96510180655
FPS-180FS10-9F	2390	*	150	243	237	185	96510180660

Notes:

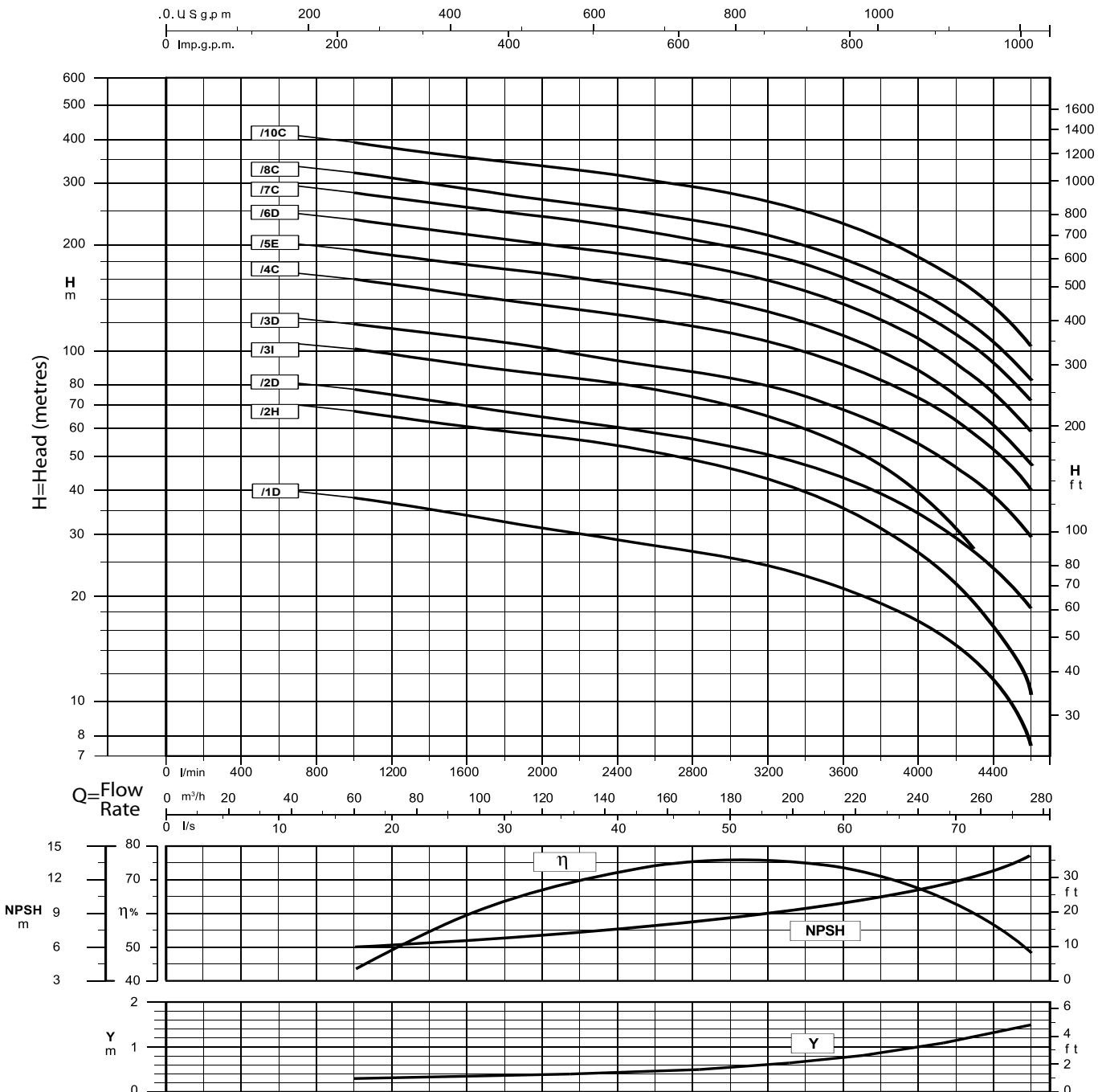
1. Dimensions in millimetres
2. Refer to Franklin motor brochure for data



Outlet flange dimensions

10" Stainless Steel

FPS-200FS Performance Curve – 50Hz

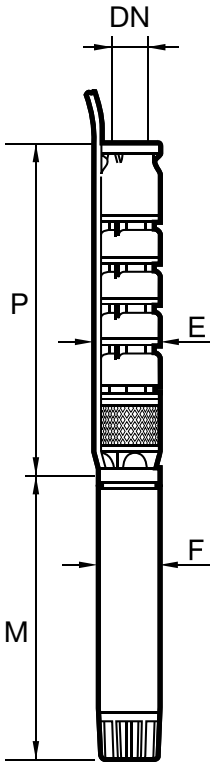


Notes:
 1 = η Pump Efficiency, NPSH (metres), Y = Non return valve loss
 2 = Curves based on density of 1000 kg/m³, viscosity of 1mm²/s, Temperature at 20°C

FPS-200FS

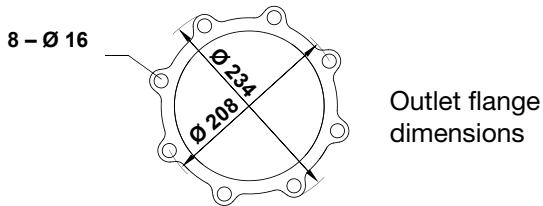
Performance and Dimensional Information

Build No.	kW	HP	l/min	0	1000	1800	2200	2500	2800	3100	3300	3500	3700	4000	4300	4600
			m ³ /h	0	60	108	132	150	168	186	198	210	222	240	258	276
			l/s	0	17	30	37	42	47	52	55	58	62	67	72	77
FPS-200FS10-1D-506018	18.5	25	Head (m)	47	38	33	30	29	27	25	24	22	20	17	13	8
FPS-200FS10-2H-508030	30	40		82	68	60	56	53	49	45	42	38	34	27	19	11
FPS-200FS10-2D-508037	37	50		96	78	67	63	60	56	52	49	45	41	34	27	19
FPS-200FS10-3I-508045	45	60		120	101	89	84	79	74	68	63	57	51	40	28	
FPS-200FS10-3D-508055	55	75		145	119	104	97	93	88	82	77	71	65	55	43	30
FPS-200FS10-4C-508075	75	100		195	160	140	132	125	118	110	104	97	89	75	58	40
FPS-200FS10-5E-508093	93	125		238	196	170	160	152	144	134	126	117	106	89	69	47
FPS-200FS10-6D-510110	110	150		289	238	207	195	185	175	163	154	143	130	109	85	59
FPS-200FS10-7C-510130	130	175		340	281	244	230	219	207	193	182	169	155	130	102	72
FPS-200FS10-8C-510150	150	200		389	321	279	263	250	236	221	208	193	177	149	117	83
FPS-200FS10-10C-510185	185	250		486	393	349	328	312	295	276	260	242	221	186	147	103



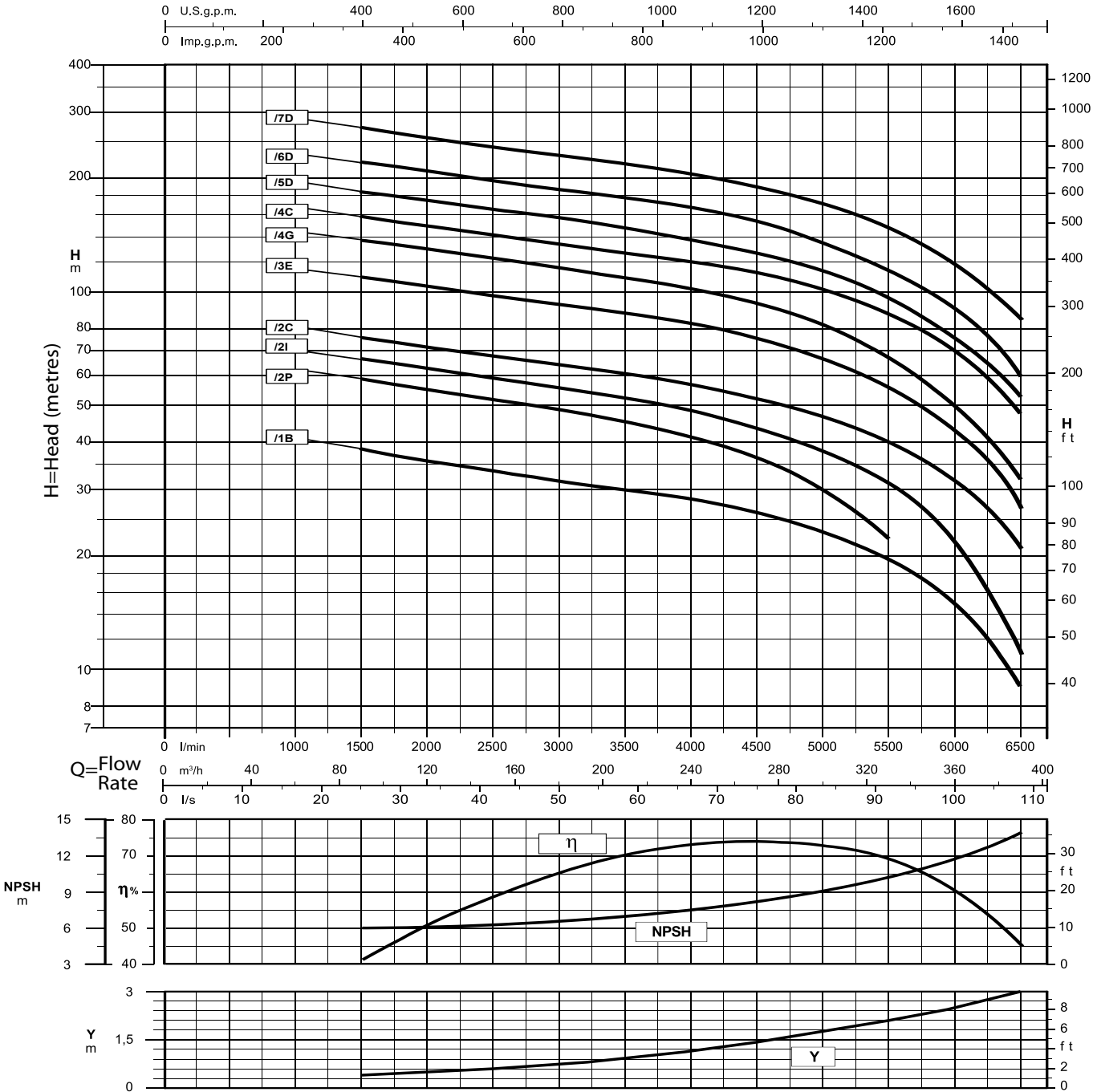
Model	P	M	DN	E max	F	Weight (kg)	Order No.
FPS-200FS10-1D	687	*	150	238	142	47	96510200605
FPS-200FS10-2H	867	*	150	238	142	63	96510200610
FPS-200FS10-2D	867	*	150	238	190	64	96510200615
FPS-200FS10-3I	1047	*	150	238	190	80	96510200620
FPS-200FS10-3D	1047	*	150	238	190	80	96510200625
FPS-200FS10-4C	1227	*	150	238	190	96	96510200630
FPS-200FS10-5E	1490	*	150	238	237	121	96510200635
FPS-200FS10-6D	1670	*	150	243	237	137	96510200640
FPS-200FS10-7C	1850	*	150	243	237	153	96510200645
FPS-200FS10-8C	2030	*	150	243	237	169	96510200650
FPS-200FS10-10C	2390	*	150	243	237	201	96510200655

- Notes:**
- Dimensions in millimetres
 - Refer to Franklin motor brochure for data



10" Stainless Steel

FPS-260FS Performance Curve – 50Hz

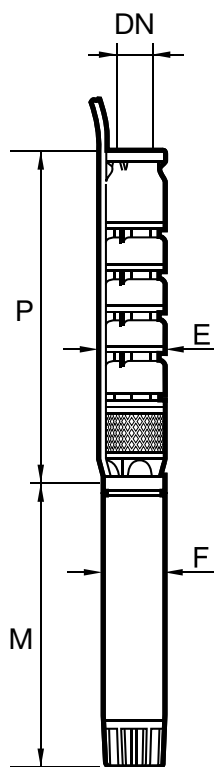


Notes:
 1 = η Pump Efficiency, NPSH (metres), Y = Non return valve loss
 2 = Curves based on density of 1000 kg/m³, viscosity of 1mm²/s, Temperature at 20°C

FPS-260FS

Performance and Dimensional Information

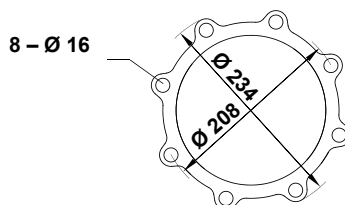
Build No.	kW	HP	Head (m)															
			l/min	0	1500	2000	2500	3000	3500	4000	4500	4750	5000	5500	6000	6500		
			m ³ /h	0	90	120	150	180	210	240	270	285	300	330	360	390		
FPS-260FS10-1B-506030	30	40	52	38	36	34	32	30	28	26	25	23	20	15	9			
FPS-260FS10-2P-508037	37	50	76	59	55	52	49	45	41	37	34	30	22					
FPS-260FS10-2I-508045	45	60	85	67	63	59	56	53	49	44	41	38	31	22	11			
FPS-260FS10-2C-508055	55	75	101	77	72	68	64	61	57	53	50	47	40	32	21			
FPS-260FS10-3E-508075	75	100	135	109	103	98	93	88	83	76	72	67	57	43	27			
FPS-260FS10-4G-508093	93	125	171	137	130	123	117	110	103	93	88	82	67	50	32			
FPS-260FS10-4C-510110	110	150	204	160	150	142	135	128	121	112	107	101	88	70	48			
FPS-260FS10-5D-510130	130	175	228	184	174	166	157	149	140	128	122	114	97	75	53			
FPS-260FS10-6D-510150	150	200	274	221	209	199	189	179	168	154	146	137	116	90	60			
FPS-260FS10-7D-510185	185	250	349	273	257	243	230	218	205	190	181	171	148	119	84			



Model	P	M	DN	E max	F	Weight (kg)	Order No.
FPS-260FS10-1B	687	*	150	247	142	47	96510260605
FPS-260FS10-2P	867	*	150	247	190	64	96510260610
FPS-260FS10-2I	867	*	150	247	190	64	96510260615
FPS-260FS10-2C	867	*	150	247	190	64	96510260620
FPS-260FS10-3E	1047	*	150	249	190	80	96510260625
FPS-260FS10-4G	1310	*	150	249	190	105	96510260630
FPS-260FS10-4C	1310	*	150	249	237	105	96510260635
FPS-260FS10-5D	1490	*	150	249	237	121	96510260640
FPS-260FS10-6D	1670	*	150	249	237	137	96510260645
FPS-260FS10-7D	1850	*	150	249	237	153	96510260650

Notes:

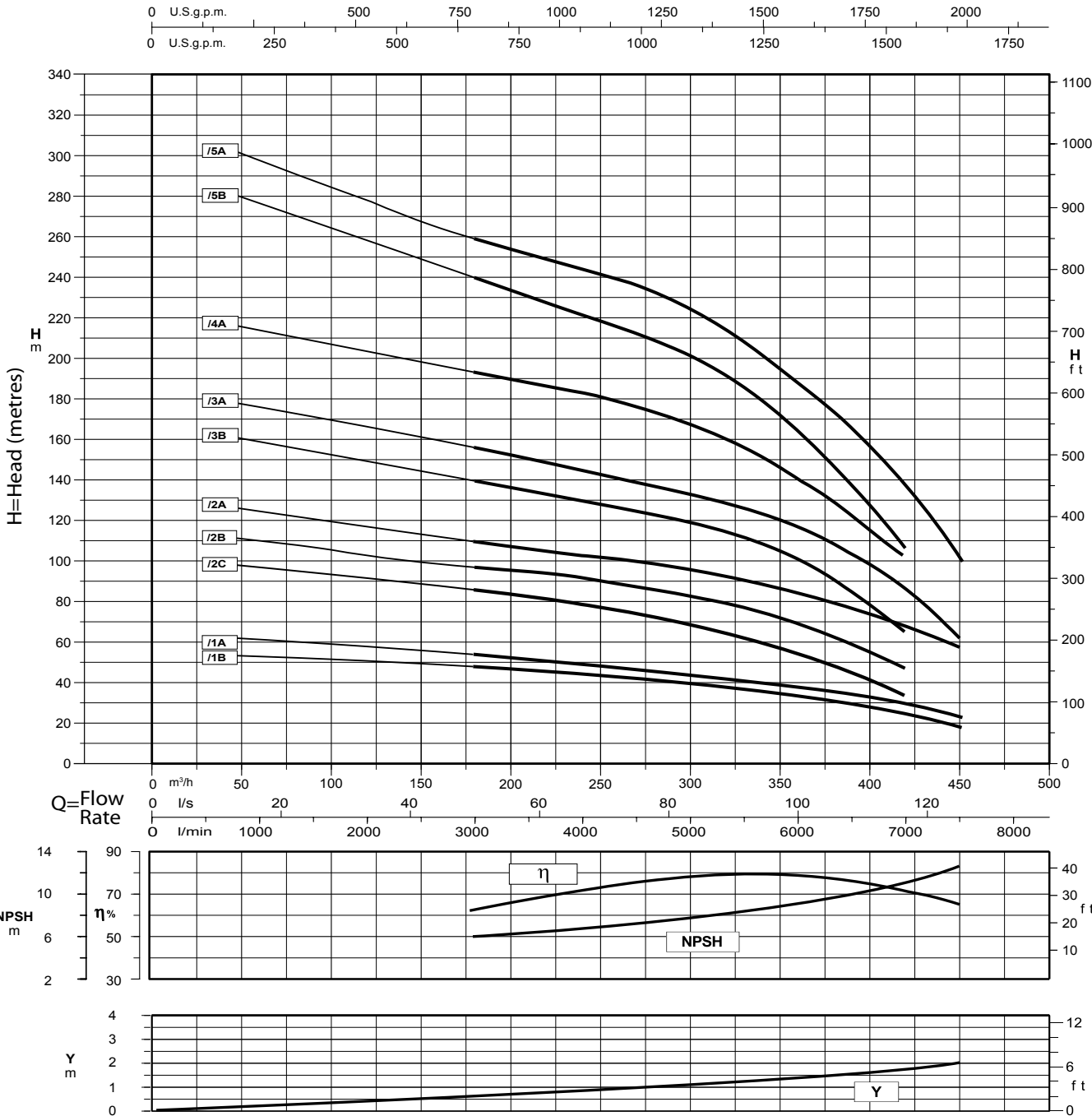
1. Dimensions in millimetres
2. Refer to Franklin motor brochure for data



Outlet flange dimensions

12" Stainless Steel

FPS-300FS Performance Curve – 50Hz



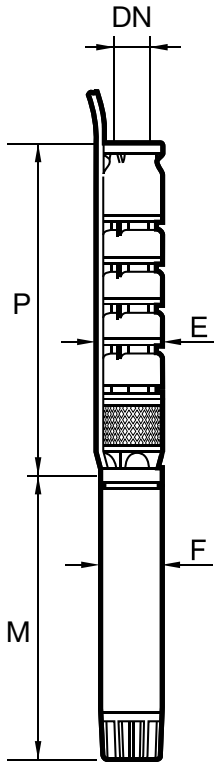
Notes:

- 1 = η Pump Efficiency, NPSH (metres), Y = Non return valve loss
- 2 = Curves based on density of 1000 kg/m³, viscosity of 1mm²/s, Temperature at 20°C

FPS-300FS

Performance and Dimensional Information

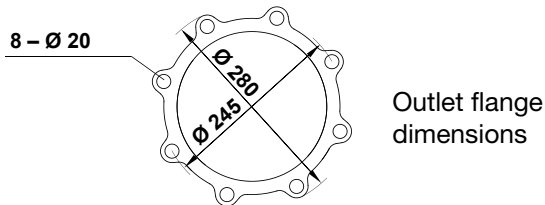
Build No.	kW	HP	Head (m)	l/min	0	3000	3500	4000	4500	4750	5000	5250	5500	6000	6500	7000	7500
				m ³ /h	0	180	210	240	270	285	300	315	330	360	390	420	450
				l/s	0	50	58	67	75	79	83	88	92	100	108	117	125
FPS-300FS12-1B-508045	45	60	Head (m)	56	46	45	43	42	41	40	38	37	34	30	25	20	
FPS-300FS12-1A-508055	55	75		63	51	50	48	47	46	45	44	43	39	36	31	26	
FPS-300FS12-2C-508075	75	100		101	85	83	79	75	73	70	67	63	54	44	33		
FPS-300FS12-2B-508093	93	125		118	98	95	92	89	87	84	81	78	69	59	47		
FPS-300FS12-2A-510110	110	150		131	108	105	103	100	98	97	95	92	86	78	69	58	
FPS-300FS12-3B-510130	130	175		169	139	134	130	125	122	120	117	112	102	87	65		
FPS-300FS12-3A-510150	150	200		185	154	149	144	140	137	134	131	127	118	105	87	62	
FPS-300FS12-4A-510185	185	250		225	193	188	183	176	172	167	162	156	140	123	102		
FPS-300FS12-5B-512220	220	300		296	238	230	222	214	208	202	193	184	164	138	105		
FPS-300FS12-5A-512250	250	340		320	259	252	245	236	231	225	218	208	188	167	138	100	



Model	P	M	DN	E max	F	Weight (kg)	Order No.
FPS-300FS12-1B	876	*	175	298	190	99	96512300605
FPS-300FS12-1A	876	*	175	298	190	99	96512300610
FPS-300FS12-2C	1076	*	175	298	190	129	96512300615
FPS-300FS12-2B	1076	*	175	298	190	129	96512300620
FPS-300FS12-2A	1076	*	175	298	237	129	96512300625
FPS-300FS12-3B	1276	*	175	298	237	158	96512300630
FPS-300FS12-3A	1276	*	175	298	237	158	96512300635
FPS-300FS12-4A	1476	*	175	298	237	188	96512300640
FPS-300FS12-5B	1676	*	175	298	286	217	96512300645
FPS-300FS12-5A	1676	*	175	298	286	217	96512300650

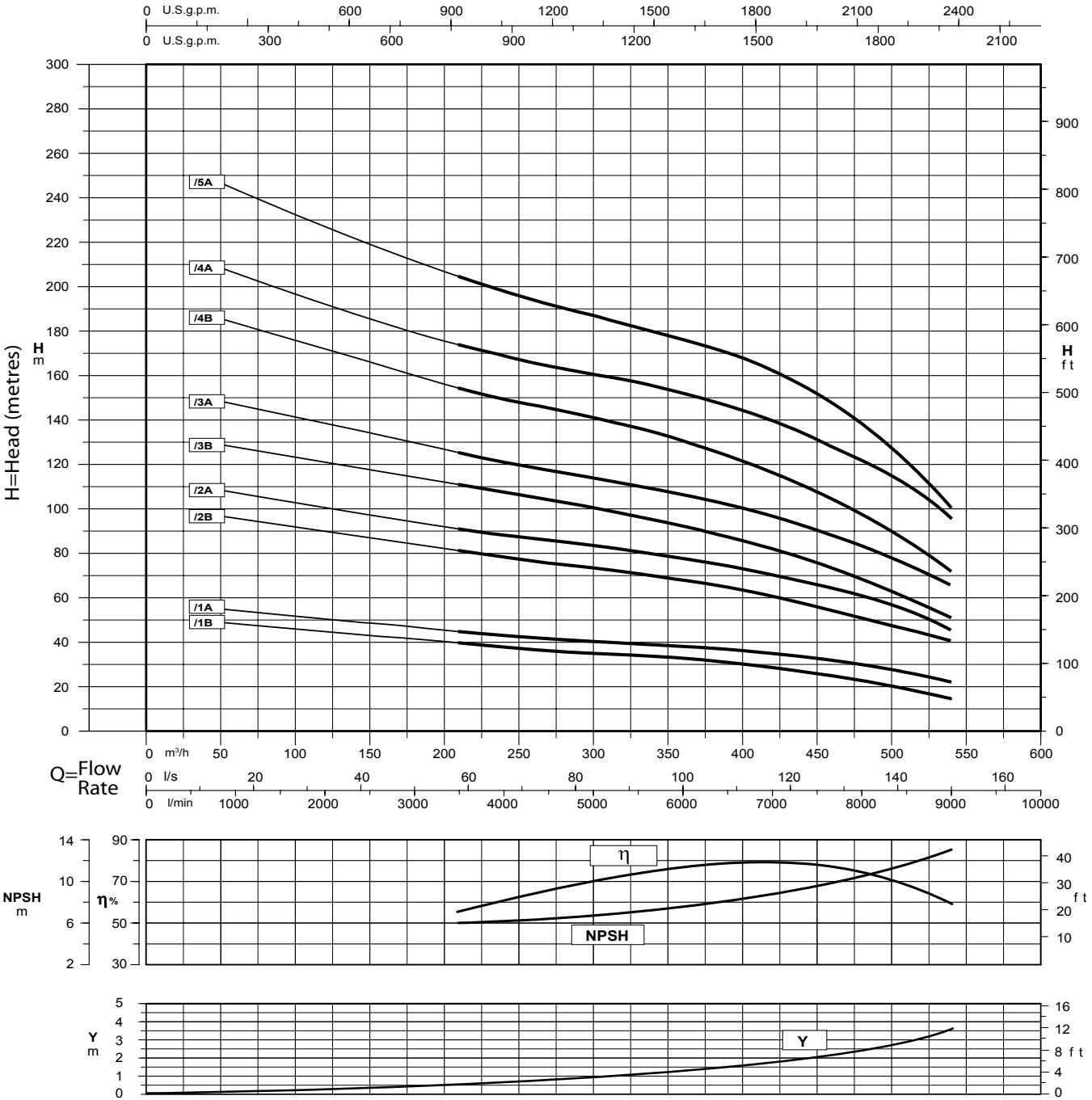
Notes:

1. Dimensions in millimetres
2. Refer to Franklin motor brochure for data



12" Stainless Steel

FPS-400FS Performance Curve – 50Hz

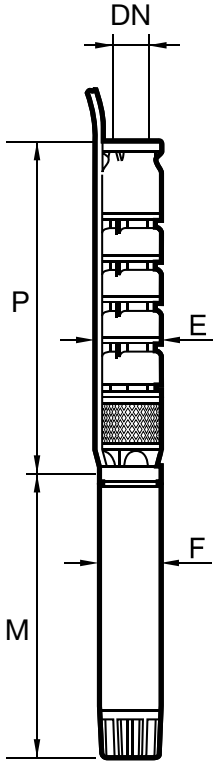


Notes:
 1 = η Pump Efficiency, NPSH (metres), Y = Non return valve loss
 2 = Curves based on density of 1000 kg/m³, viscosity of 1mm²/s, Temperature at 20°C

FPS-400FS

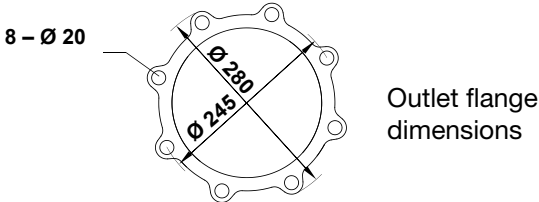
Performance and Dimensional Information

Build No.	kW	HP	Head (m)	l/min	0	3500	4000	4500	5000	5500	6000	6500	7000	7500	8000	8500	9000
				m ³ /h	0	210	240	270	300	330	360	390	420	450	480	510	540
				l/s	0	58	67	75	83	92	100	108	117	125	133	142	150
FPS-400FS12-1B-508045	45	60	Head (m)	52	40	38	37	35	34	33	31	29	26	23	19	14	
FPS-400FS12-1A-508055	55	75		59	45	43	42	40	39	38	37	35	33	30	27	22	
FPS-400FS12-2B-508093	93	125		102	81	78	76	73	71	68	65	61	56	52	46	41	
FPS-400FS12-2A-510110	110	150		115	91	88	86	83	81	78	75	71	66	61	54	46	
FPS-400FS12-3B-510130	130	175		134	111	108	104	101	97	93	88	82	76	68	60	51	
FPS-400FS12-3A-510150	150	200		157	124	121	117	114	110	107	103	97	91	84	76	67	
FPS-400FS12-4B-510185	185	250		196	154	150	145	141	136	130	124	117	108	97	86	72	
FPS-400FS12-4A-512220	220	300		221	174	169	165	161	157	152	147	140	131	122	111	96	
FPS-400FS12-5A-512250	250	340		261	204	198	193	187	182	177	171	162	152	139	122	100	



Model	P	M	DN	E _{max}	F	Weight (kg)	Order No.
FPS-400FS12-1B	876	*	175	298	190	96	96512400605
FPS-400FS12-1A	876	*	175	298	190	96	96512400610
FPS-400FS12-2B	1076	*	175	298	190	123	96512400615
FPS-400FS12-2A	1076	*	175	298	237	123	96512400620
FPS-400FS12-3B	1276	*	175	298	237	149	96512400625
FPS-400FS12-3A	1276	*	175	298	237	149	96512400630
FPS-400FS12-4B	1476	*	175	298	237	176	96512400635
FPS-400FS12-4A	1476	*	175	298	286	176	96512400640
FPS-400FS12-5A	1676	*	175	298	286	203	96512400645

- Notes:**
- Dimensions in millimetres
 - Refer to Franklin motor brochure for data



Notes

Notes



Franklin Electric

AUSTRALIA / NEW ZEALAND

Franklin Electric (Australia) Pty. Ltd.
106-110 Micro Circuit
Dandenong South, Victoria 3175
Australia

Toll Free: 1300 FRANKLIN
Fax: +61 3 9799 5050
Tel: +61 3 9799 5000
www.franklin-electric.com.au

UNITED STATES

Franklin Electric Co., Inc.
400 E. Spring Street, Bluffton, IN 46714 USA
Tel: +1.260.824.2900 Fax: +1.260.824.2909